

SPOSgroup

Supermarket Retail Solutions

*"We design, make, procure, sell, manage and supply
the products that sell your products"*

02 8667 4600
sales@sposgroup.com
www.sposgroup.com



Disclaimer:

The information in this catalogue is the intellectual property of SPOS Group and is confidential, and intended solely for the Addressee. If you have received this information in error, please delete it immediately and notify the sender. Any copying or further distribution beyond the original addressee is not permitted, and may be unlawful. In receiving this information you agree that any intellectual property rights in the POP Goods, Services or Concepts contained within are and shall remain the property of SPOS.

SPOSgroup

Leading Retail Solutions

Shelf Fronting Systems

***Solutions designed to bring stock forward,
reduce maintenance and restocking, whilst
improving store presentation & sales.***

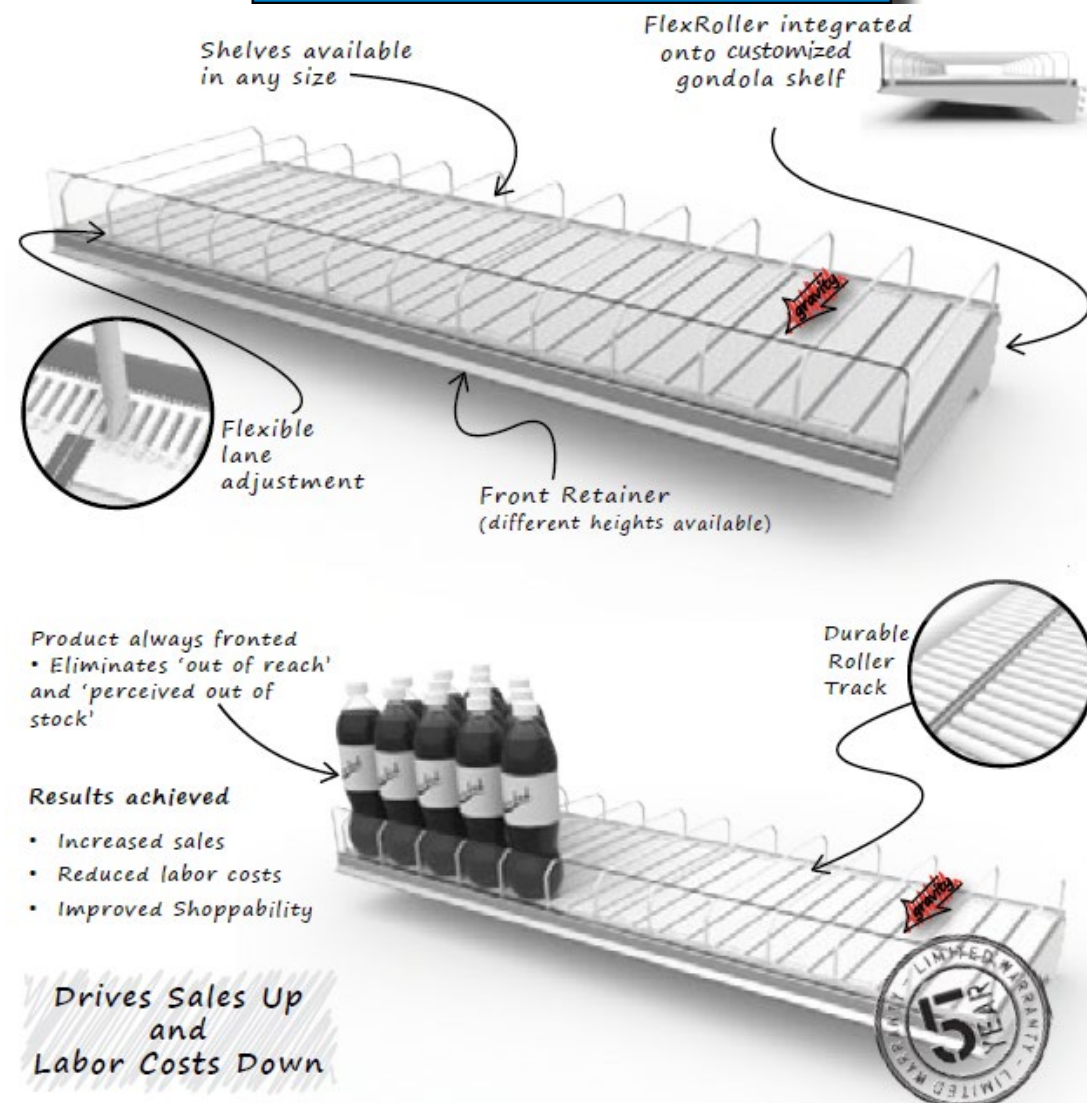
Shelf Fronting Systems

IMPROVE STORE PRESENTATION WHILE REDUCING MAINTENANCE & RE-STOCKING.

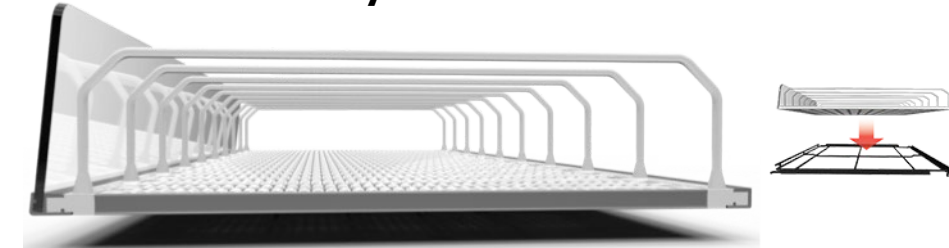
- The Roller Shelf System ensures products are always fronted to the shelf edge whilst reducing maintenance and re-stocking.
- 5 Year Warranty, durable long life fronting solution.
- Works at minimal shelf angles, as little as 3°, which requires less vertical shelf space.

Pricing & Configuration on Application. Please contact SPOS.

TO REQUEST A QUOTE AND SEE
FLEXROLLER IN ACTION, VISIT
www.sposgroup.com/flexroller



Layover Glide



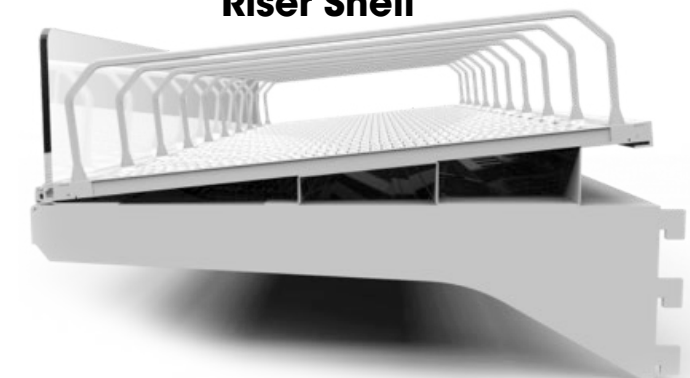
- The FlexRoller Layover glide installs on existing gondola or wire shelves.
- A minimum of a 3 degree angle is required for optimal performance of fronting product on the FlexRoller tray. Depending on product packaging details, a stepper angle (of ~6 degrees) may be beneficial.

Gondola Shelf



- The FlexRoller Gondola shelf is customised to integrate into existing retailer gondola uprights
- The build-in bracket will create the perfect angle for optimum performance

Riser Shelf



- The FlexRoller with Riser glide installs on existing flat gondola shelves.
- The riser accessory adds the optimal and stable angle that is required

Shelf Fronting Systems



FlexRoller in Health and Beauty

"Layover Glide Rollers"

Always Fronted, Easily restocked.

FlexRoller in Vitamins

"Gondola Shelf Rollers"

Always Fronted, keeps stock organised in lanes.

Shelf Fronting Systems

FlexRoller in Softdrink & Energy Drinks

"Layover Glide Rollers"
Always Fronted, More enticing to customers.
Reduced labour and re-stocking times.
Maximum planogram flexibility and near no loss of vertical space.



FlexRoller Opportunity Categories

Designed to Deliver

FlexRoller in Juice & Health Drinks

"Layover Glide Rollers"

Always Fronted, more enticing to customers.

Reduced labour and re-stocking times.

Maximum planogram flexibility and near no loss of vertical space.



Kombucha without FlexRoller!

- Categories without shelf management can create the perception that they are out of stock, or disorganised, due to the high traffic in these categories.
- Multiple brands, flavours and variants increases confusion, FlexRoller assists in product presentation and improves the overall shopping experience.

K
O
M
B
U
C
H
A



FlexRoller Opportunity Categories

Designed to Deliver

FlexRoller in Dairy



"Layover Glide Rollers"

**Always Fronted, more enticing to customers.
Reduced labour and re-stocking times.
Maximum planogram flexibility and near no
loss of vertical space.**

**There are more options for dairy
merchandising such as 'Bulk Racks' &
'Cold Vault Rolling Carts' which suit a rear-
loading model for cold vault setups in
Supermarkets.**



Bulk Rack

- The bulk rack integrates FlexRoller lanes to flawlessly front-face any large product (EG: beverage packs, large cartons, watercooler refill, milk cartons)
- Lanes are adjustable and attach to a sturdy main frame structure.
- Lanes can be restocked from rear or front of the main structure.

FlexRoller Opportunity Categories

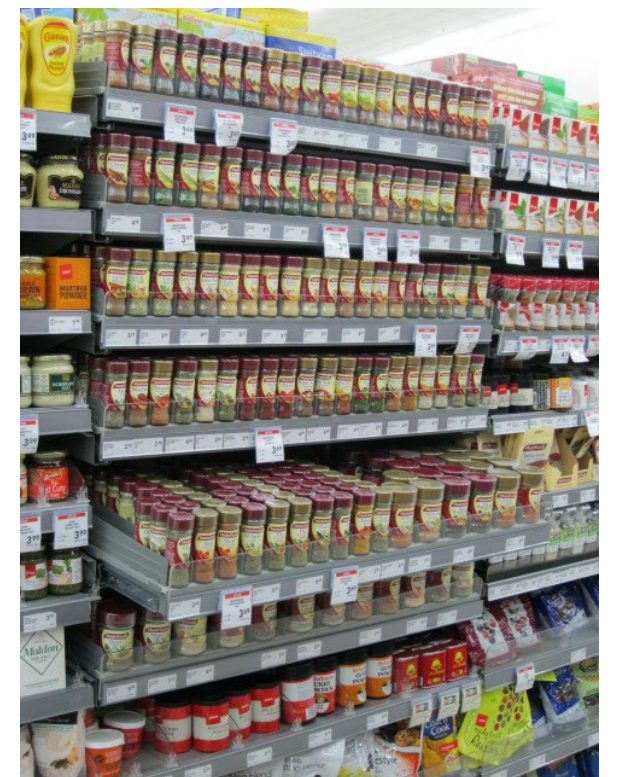
Designed to Deliver

FlexRoller in Herbs and Spices (Small Format)



Pull Out Shelf

- Shelves available to suit product of any size.
- FlexRoller lanes integrated into custom pull out shelves. Allows staff to pull out shelf to restock from rear.
- Lockable with hidden release.
- Gives access to tight planograms
- Thin dividers allow for many lanes without loss of facings.



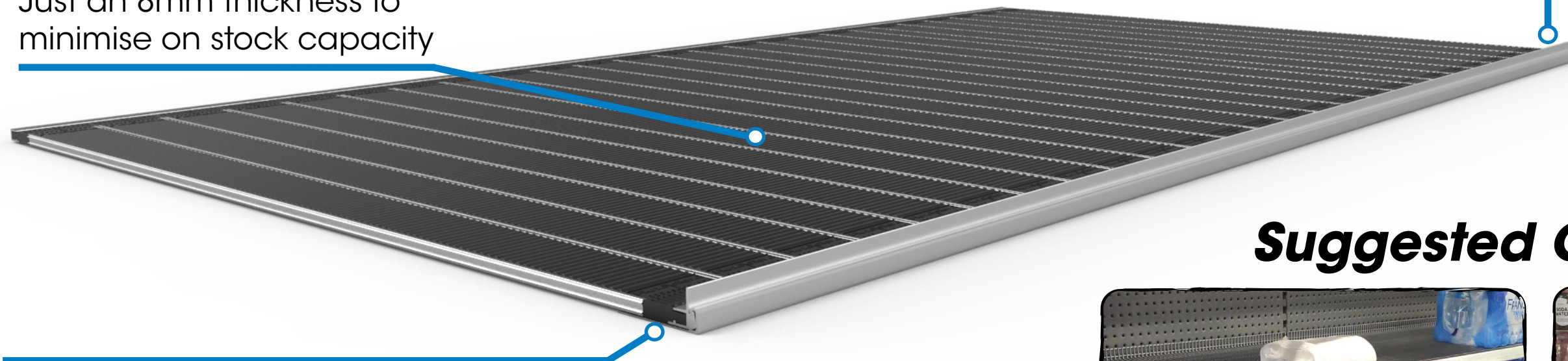
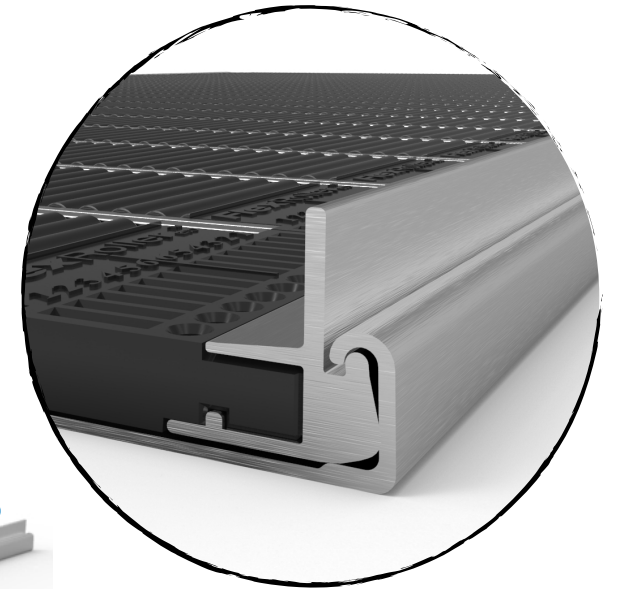
FlexRoller in Bulk/Heavy Goods

Designed to Deliver ●●●●●

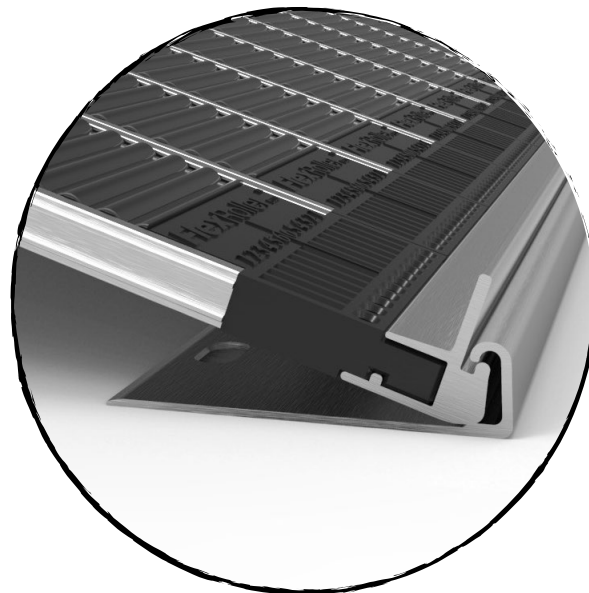
FlexRoller can be used to aid customers in shopping large, bulky and heavy goods. FlexRoller durastically reduces the effort and strain required to shop bulky goods from the shelf. Additionally, improving the ease of re-stocking for store staff, reducing restocking & fronting time and minimising risk of injury.

Just an 8mm thickness to minimise on stock capacity

10mm tall aluminium retainer prevents cartons falling off the shelf and aids in keeping product aligned to front of shelf.



Front aluminium rail is fixed to the front of the wire shelf. The FlexRoller tray angles in and locks to the front rail to secure in place



Suggested Categories



Hanging **ProPusher** 600®

With Airflow

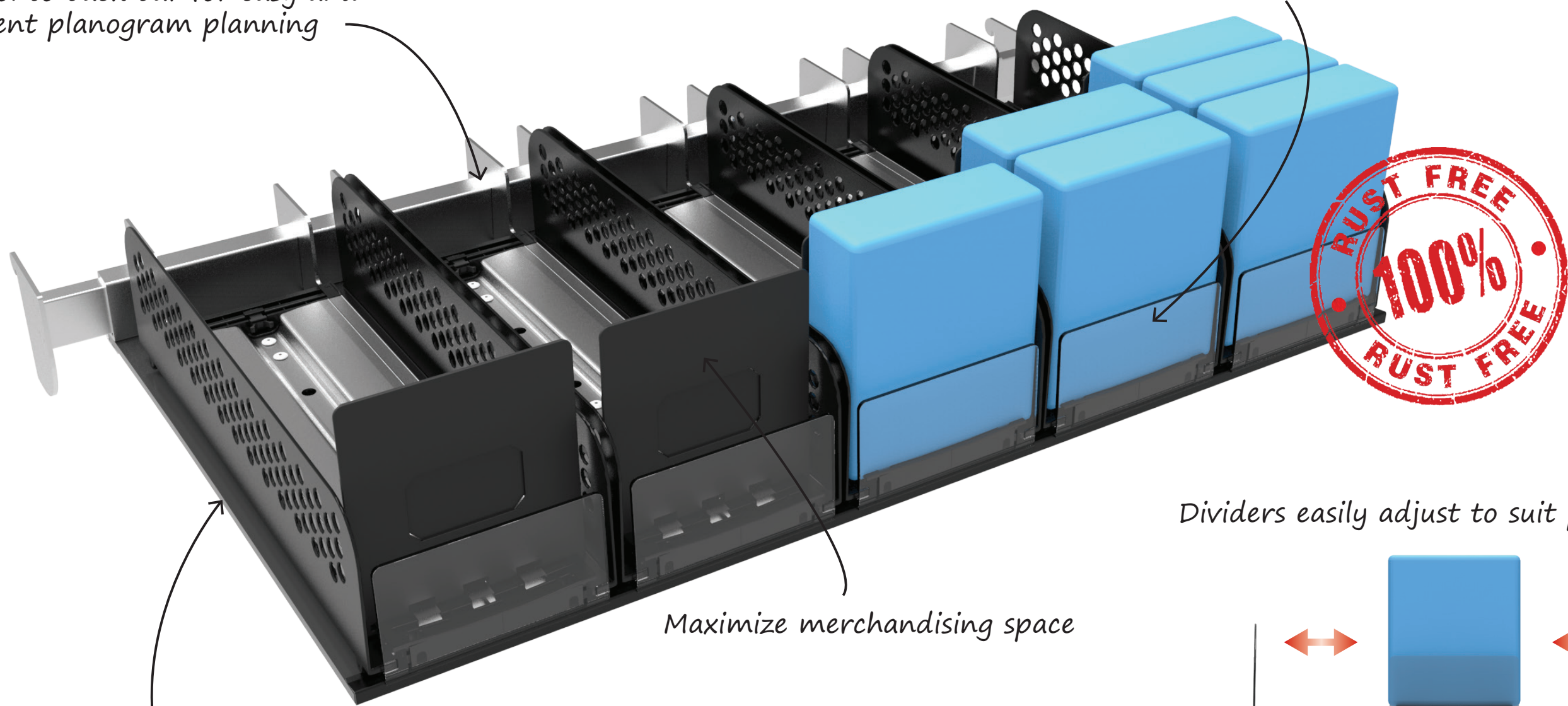
Hanging Fronting System

Organized - Effective - Profitable

- **Modular cross bar merchandising / Maximises category space**
- **Improves stock rotation / Reduces spoilage product**
- **Perfectly suited for freezer installation**
- **Enhanced presentation / Drives sales!**

Installs onto back bar for easy and convenient planogram planning

Custom retainer shapes and height options available



Dividers easily adjust to suit packages



135mm(min)-335mm(max)

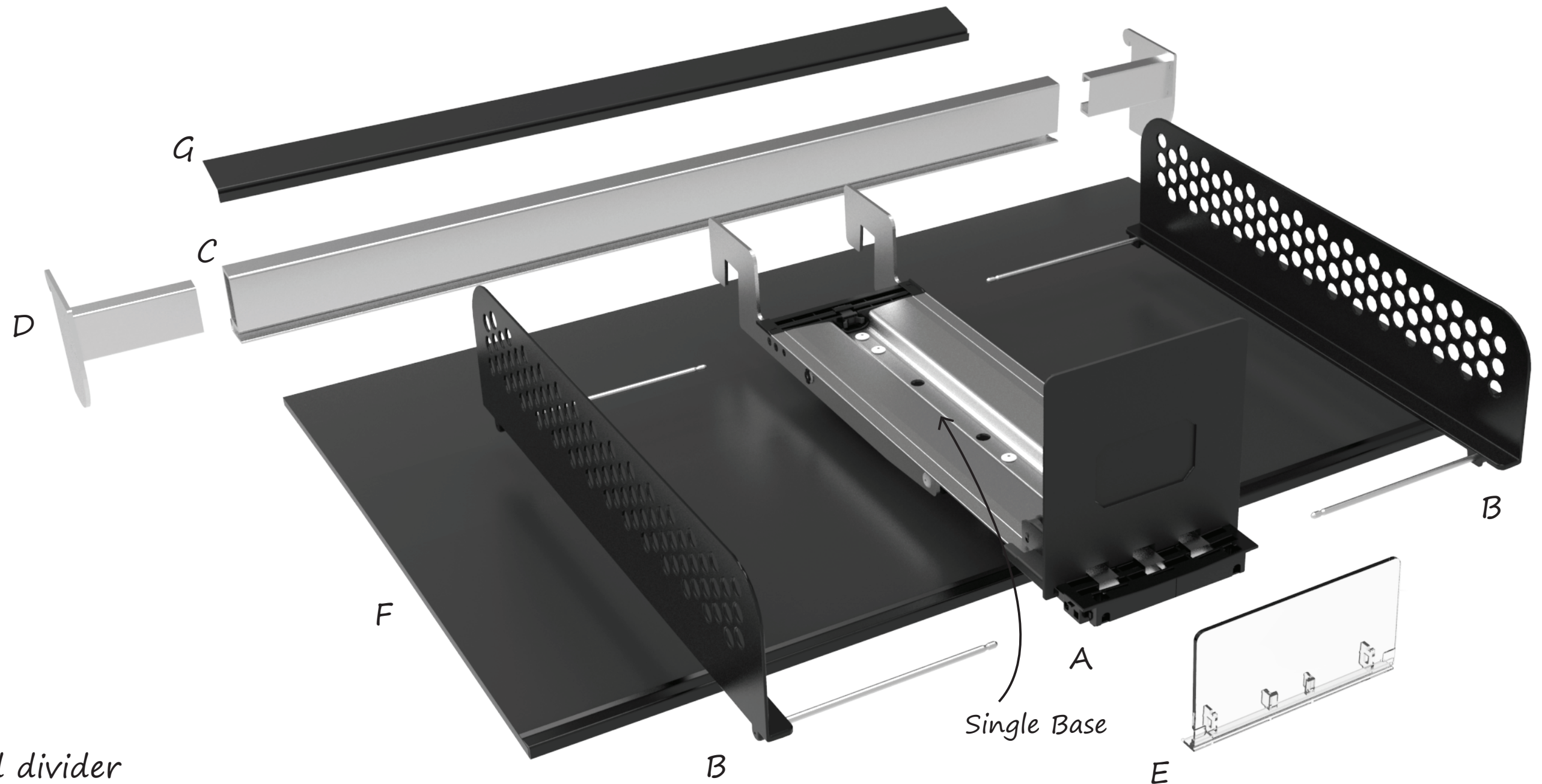
The airflow matt and rear PVC extrusion keep temperatures and scents consistent across all layers.

Hanging **Pro**Pusher 600®

With Airflow

Hanging Fronting System

Organized - Effective - Profitable



- A – Pusher
- B – Injected divider
- C – Aluminum back rail (for installation)
- D – Custom brackets to fit any upright
- E – Clear front retainer
- F – Airflow matt
- G – Airflow rear PVC extrusion

Hanging ProPusher in Salad Bags



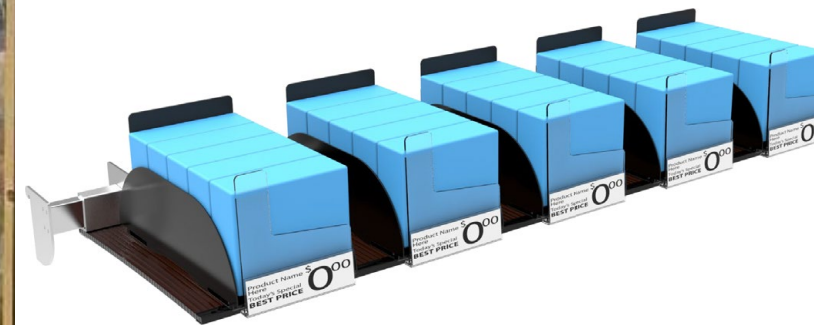
Before ProPusher



After ProPusher

Supermarket Bagged Salads displayed on Hanging Versa

- Each salad pack located in its own 'pigeon hole'
- Product is automatically fronted once a pack is removed
- Easy for consumers to identify type of salad
- Easy to replenish and identify out of stock as well as date coding



+ 26% Sales uplift year on year

+ 4% Sales uplift on format year on year

(independent study in NZ supermarket 2018)

Versa ProPusher in Frozen Meals

Before



After



- Where Hanging ProPushers are not suitable or not required, Versa ProPusher can be used on wire, or solid shelves to front products.
- Allows for a flat planogram (no shelf angle required), meaning no loss in vertical merchandising/planogram space
- Maximises fridge space allowing a fully stocked fridge to be shopped down to the last product, always fronted and facing customer.



VersaPusher
Designed to Deliver

TO REQUEST A QUOTE AND SEE
VERSAPUSHER IN ACTION, VISIT
www.sposgroup.com/versapusher

02 8667 4600
sales@sposgroup.com

SPOSgroup

Hearday Creative

spos

posm
solutions

Ticket IT
In-Store Ticketing

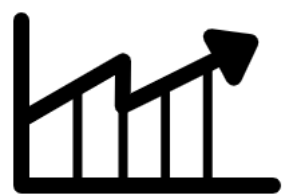
Hanging ProPusher in Confectionery



- Variants are available that are designed for ambient product merchandising as well. Ideal for confectionery or other boxed ambient products.

Hanging ProPusher 600

- Hanging ProPusher 600 can push products from 135 -335mm width.
- Optional clip on datastrip for the front retainers available.



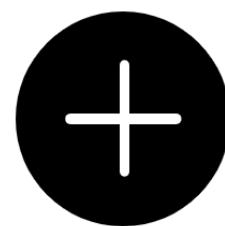
Boost Sales

ProPusher Automatic fronting produces consistent well presented categories. Entices customers impulse purchases.



Cut Labour Costs

Eliminate the need for manual fronting and shelf organization by employees.



Increase Facings

Space is utilised more efficiently due to elimination of hooks and shelving. Allowing for more product in the category.



Shelf Fronting Systems

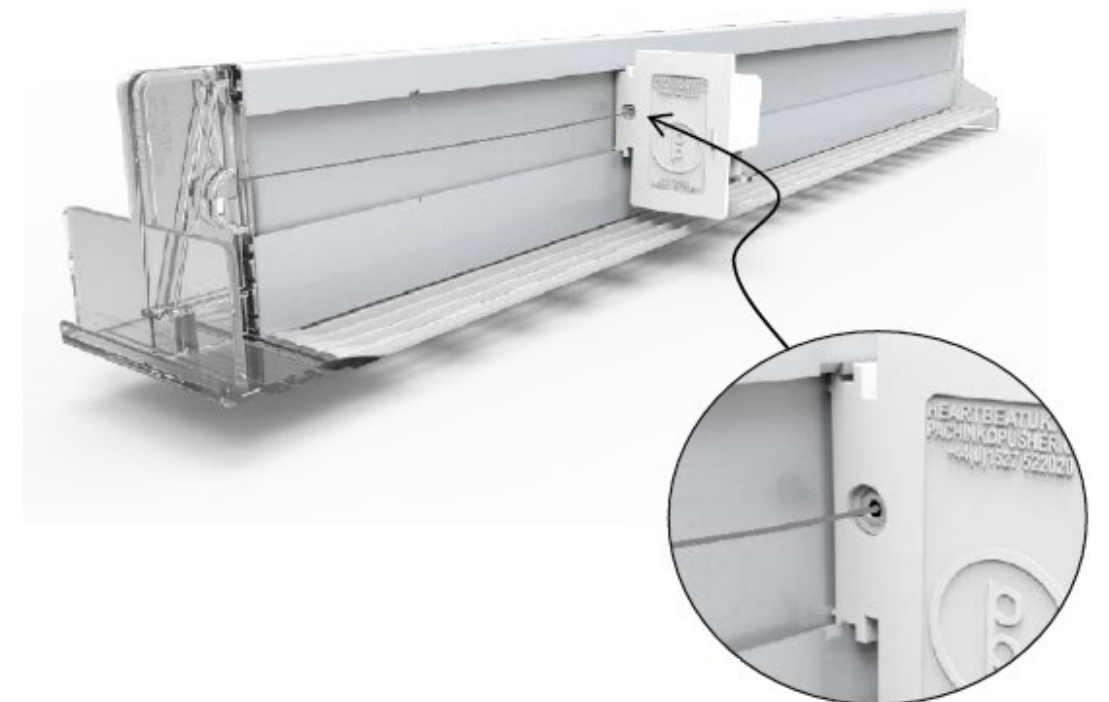
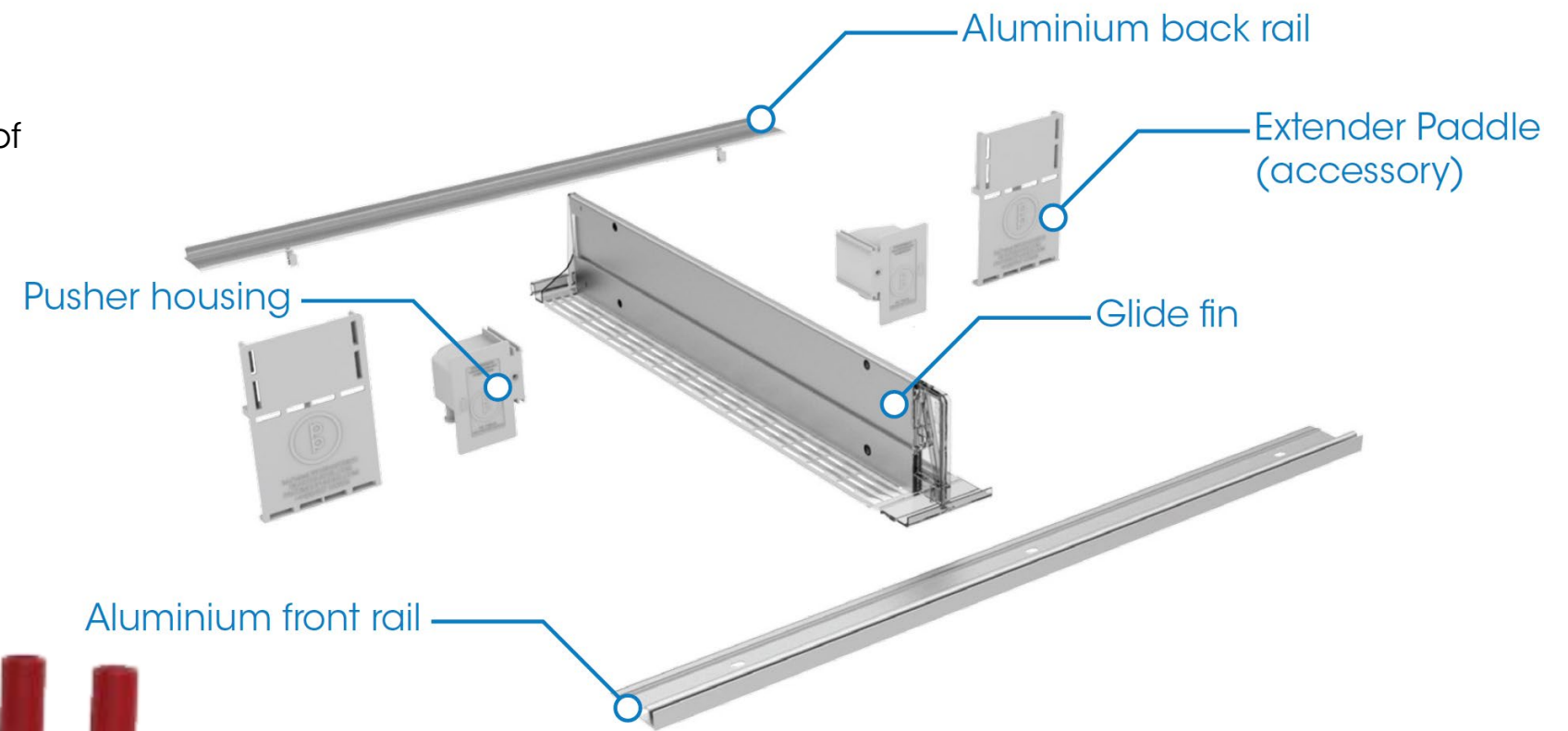
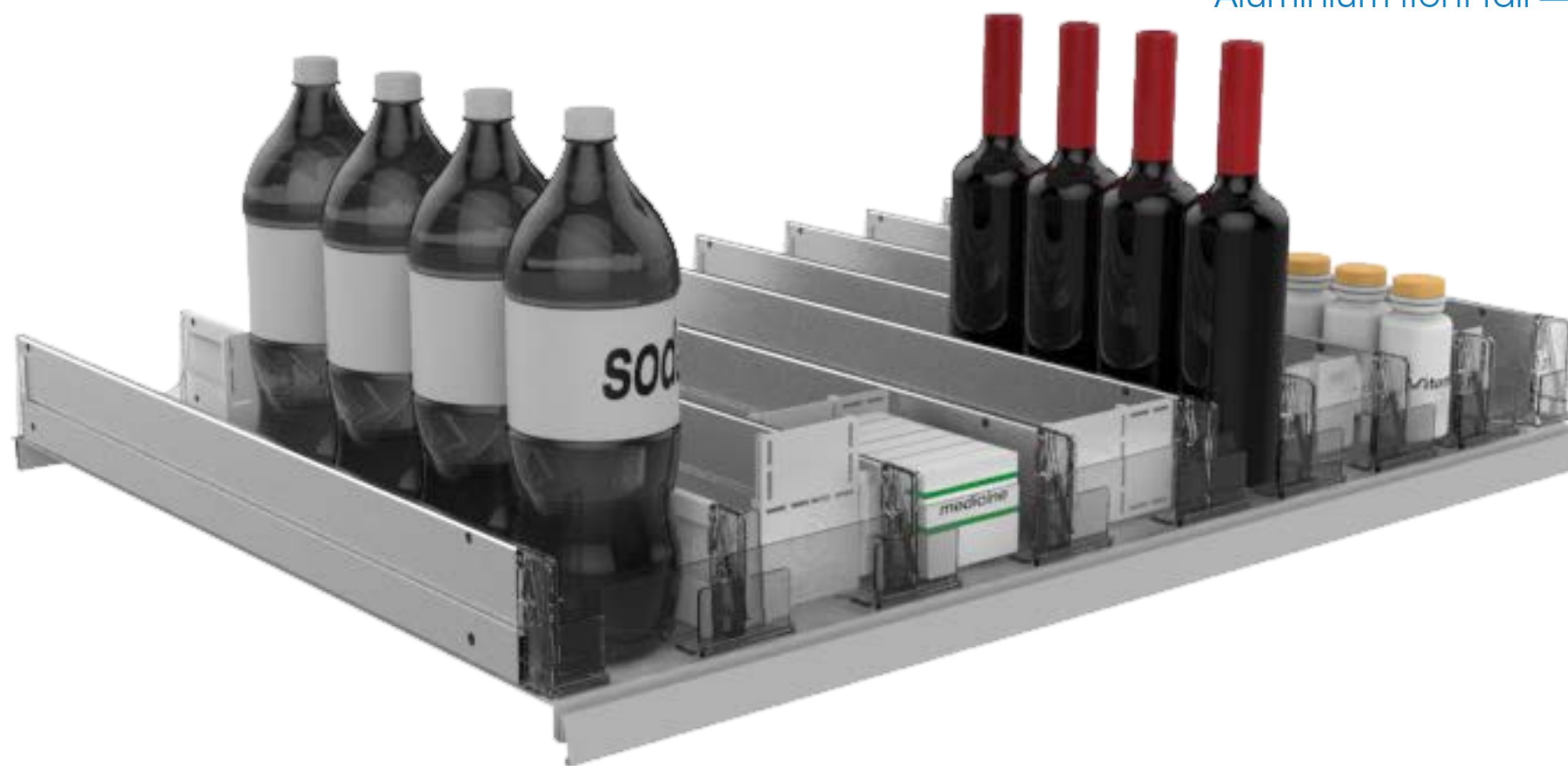
ProGlide
Designed to Deliver

*Introducing ProGlide, a gentle fronting merchandiser...
Controlled fronting motion that drives sales.*

- Controlled feed for multiple categories
- A gentle, quiet fronting merchandiser that eliminates the 'clanging' of bottles in liquor categories
- Fast and simple replenishment that saves labour
- Modular planogram for complete flexibility on width
- Depth versatility from 270 to 770mm
- Easy installation with no tools required

Pricing & Configuration on Application. Please contact SPOS Group.

SEE IT IN ACTION!
www.sposgroup.com/proglide



Shelf Fronting Systems

ProGlide in Hygiene



ProGlide in Automotive



ProGlide in Wines & Soft Drink

Always Fronted, eliminate "out of stock" perception.



ProGlide in Medicinal

Keeping category fronted and presntable.

Less confusing for customers.

Prevents different size bottles from getting mixed in or lost.



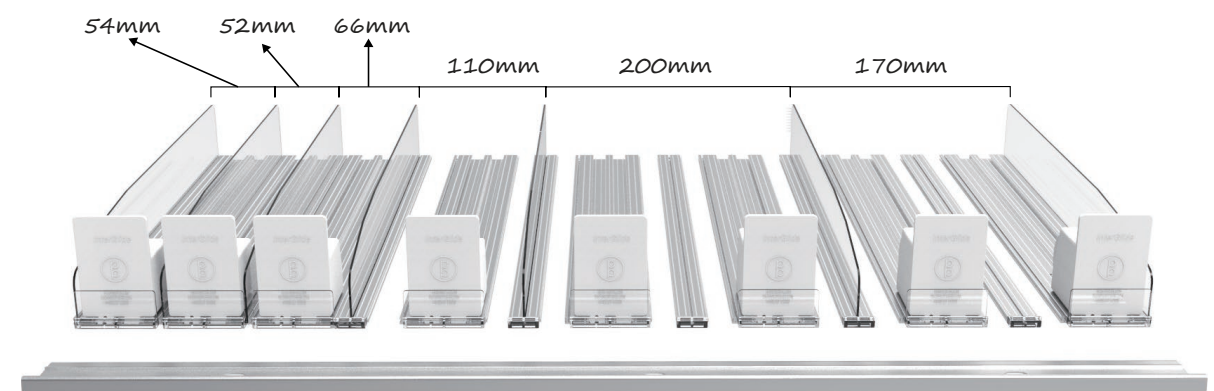
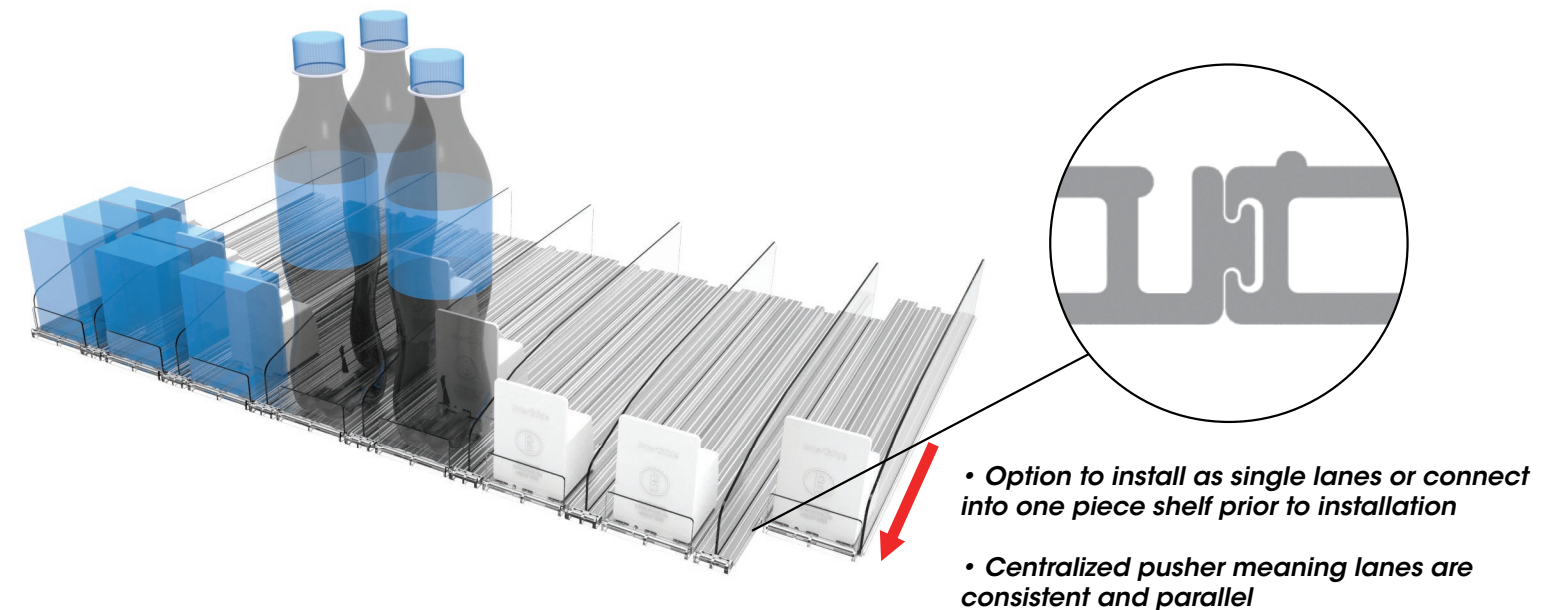
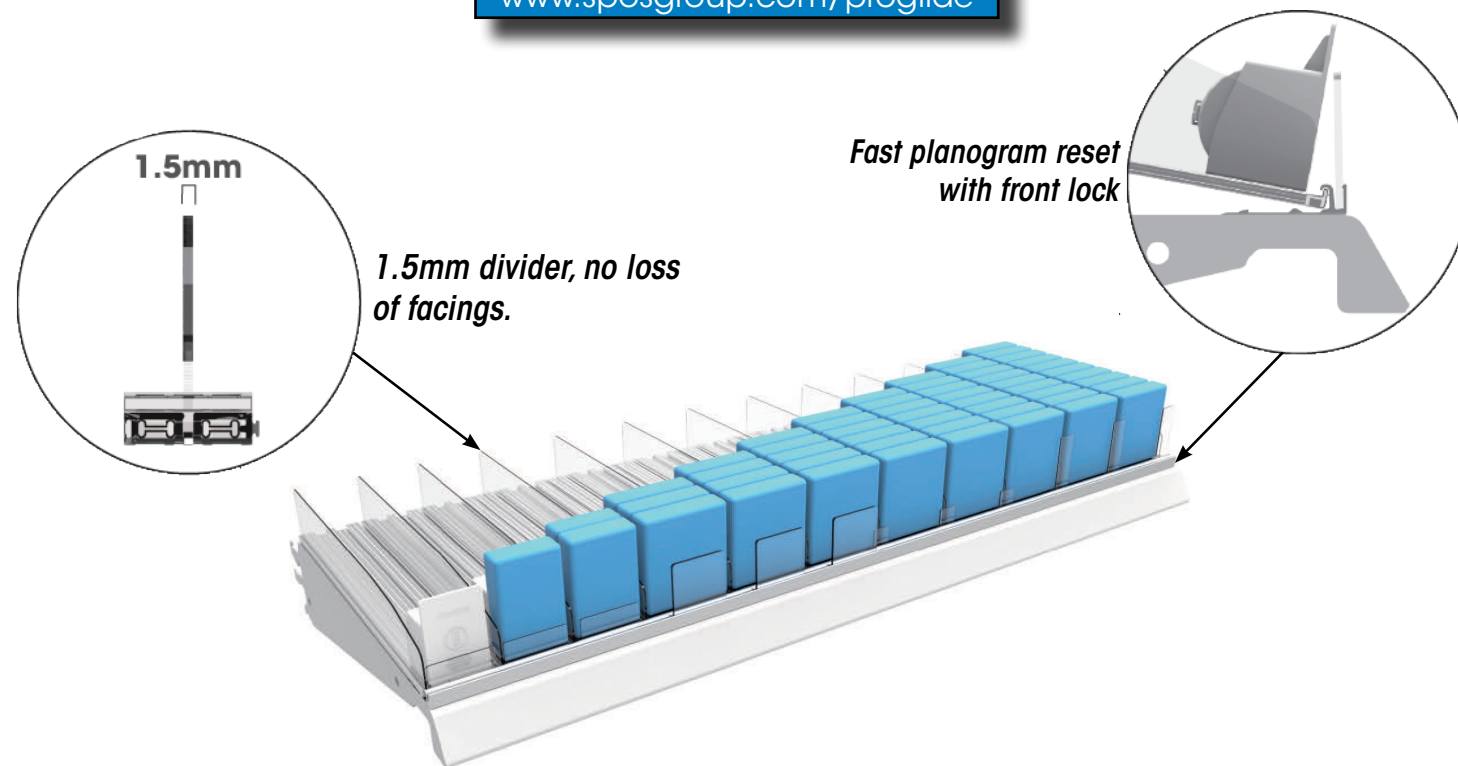
Shelf Fronting Systems

*InterGlide, a modular interlocked fronting system...
Gentle fronting motion with zero loss of facings.*

- Allowing efficient dividing of the category with ProGlide's 1.5mm dividers resulting in maximum facings per shelf.
- The front engagement system makes planogram adjustments and resets fast and easy.
- Modular lane assembly - complete flexibility on width
- Depth versatility - 350mm to 600mm
- Centralized bottom mounted pusher, lanes are consistent and parallel
- Easy installation with no tools required

Pricing & Configuration on Application. Please contact SPOS.

SEE IT IN ACTION!
www.sposgroup.com/proglide



InterGlide is so gentle & controlled, it can even front stacked cans category. Enabling a high density shelf to be fronted seamlessly!

Shelf Fronting Systems

InterGlide in Health & Beauty

InterGlide
Designed to Deliver



**Interglide uses ultra thin dividers and controlled fronting.
Seamless fronting stock completes the clean premium look.**

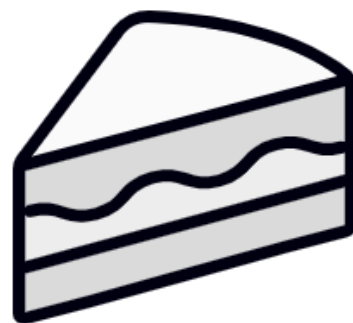


**Interglide in Health/Medicinal
Keeps multiple products fronted and organised to
reduce customer confusion.**



InterGlide Opportunity Categories

Cakes



Protein Powder



Pasta

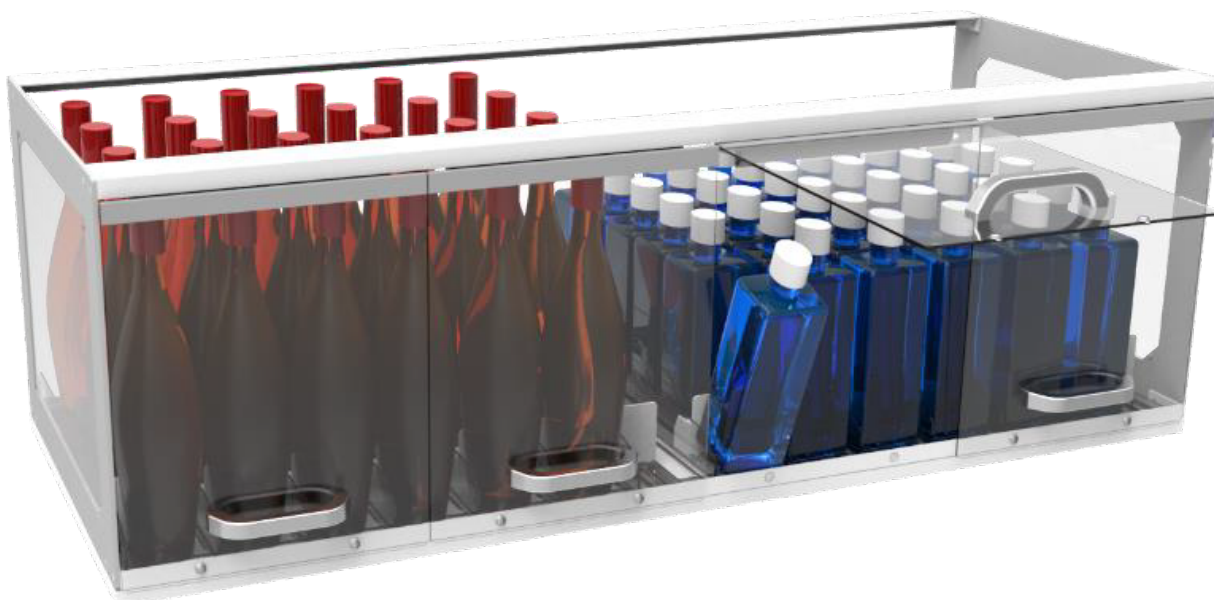


Shelf Fronting Systems

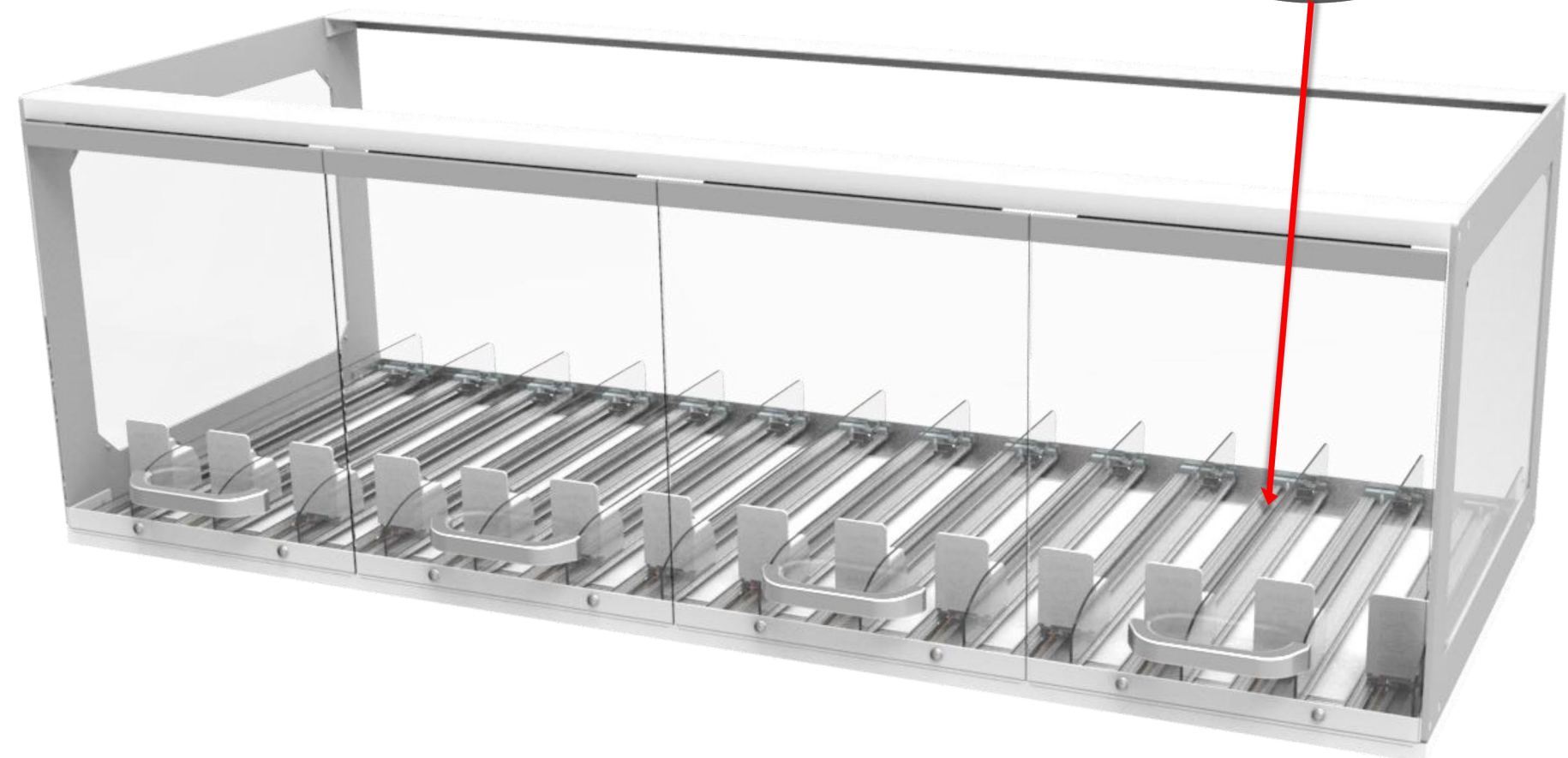
ProCab, a Loss Prevention solution for high value products. Can combine with InterGlide/ProGlide.

- A drop-in shelf solution which houses mid to high end liquor.
- Hinged Doors force a 2-handed operation whilst shopping.
- Reduces shrinkage by 25-35%
- Combined with the InterGlide slow-release pusher system

Pricing & Configuration on Application. Please contact SPOS.



ProGlide or InterGlide can be integrated into the ProCab system.



SPOSgroup

Leading Retail Solutions

Bespoke Solutions for Supermarket

Our award winning designs bring supermarket stores a step forward in retailing.

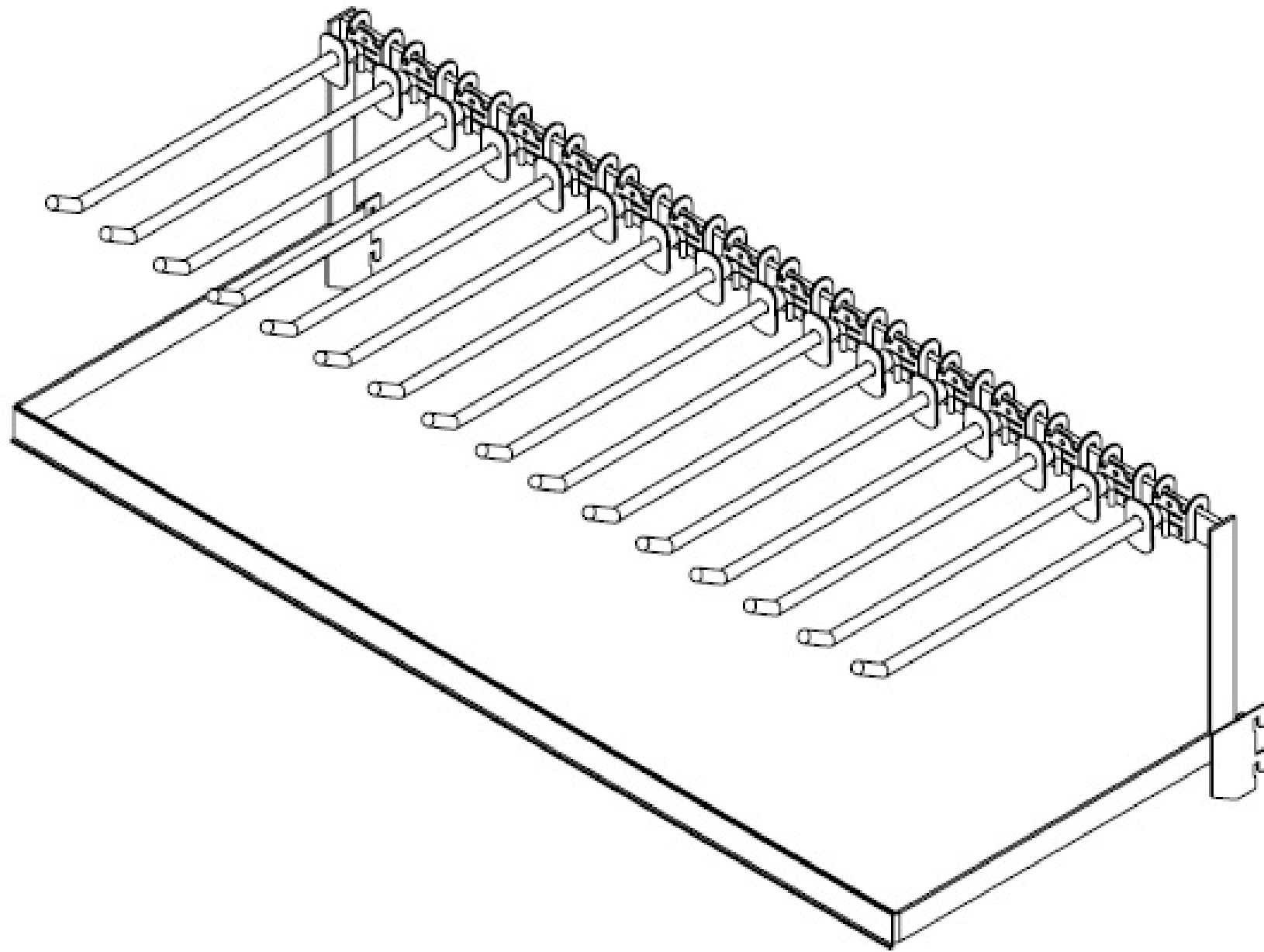
Bespoke Solutions for Supermarket



The Floating Newspaper Display

- Freestanding Cube Unit, 4 sided paper presenter.
- Promote specials & create additional merchandise space.

Toothkits



Toothbrush Hangsell Solution

- Crossbar mounted hangsell kits for installation on gondola shelving.
- Datastrip brackets allow pricing to be placed and create 'floating shelf'

Cardboard Solutions



Cardboard Displays are flexible, low cost, and effective product presenters.

- ***Off-the-shelf and custom designs available***
- ***Multitude of weight/size capacities to suit any product***
- ***Perfect for temporary or semi-permanent display***

Giftcard Units



Bespoke Gift Card Solutions

- **Freestanding Cube Unit, 4 sided card presenter.**
- **Promote specials & create additional merchandise space.**

SPOSgroup

Leading Retail Solutions

Complete Signage Solutions

***In store signage is an essential marketing tool
for customer communication and engagement.***

Complete Signage Solutions

In-store signage is an essential marketing tool for customer communication and engagement. Whether you are displaying new product, sale offers, seasonal promotions or product information SPOS has a sign or ticket display system that will work for you.



Snap Frames



Poster Frames



Magnetic DuraFrames



Sign Arms



Floor Stands

Sizes

Poster Frames and Snap Frames are available in sizes from A0 to A6. Most sizes can be ordered in both portrait and landscape formats.

Accessories

A wide range of accessories are available, including solutions for floor and shelf mounting or suspension.

Rotating Aisle Display



In-store promotions and product information can be a huge boost to your business triggering above the line advertising recall in-store, introducing new products or promoting sale items. The RAD is also an effective tool in categories where you need to provide shoppers with product information to guide their purchase decisions.

UNIT SPECIFICATIONS

Height: 600mm Width: 130mm Depth: 130mm
Fabricated metal powder coated body and brackets with 3 PVC insert graphic covers. Graphic panels sold separately. Full in house graphic design service available contact the SPOS customer service team for further information.



Sign Holders



Acrylic Displays



Poster Rails



Hanging Systems

Queuing Solutions

Our queuing & merchandising system is a versatile queuing solution that uplifts sales and improves customer flow in-store.

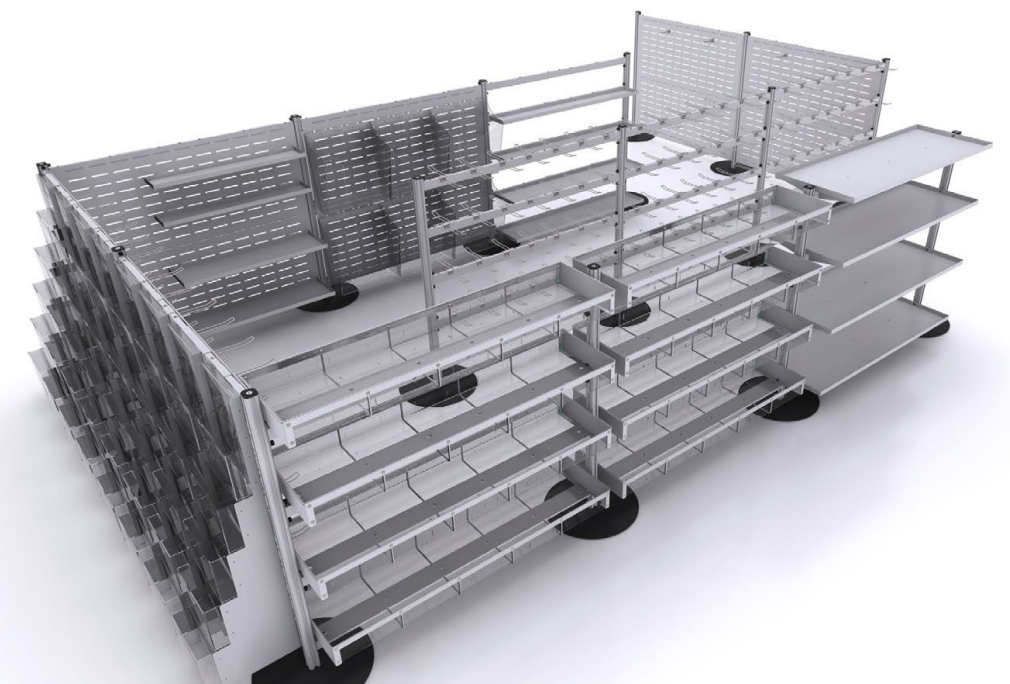


Benefits

Drive Sales: Our system has been proven to increase impulse purchases by up to 40%.

Increase In-Store Branding: Our solutions create additional POS opportunities for both brands and retailers.

Recover Costs: System Investment costs can be recovered quickly by obtaining premium placement fees.



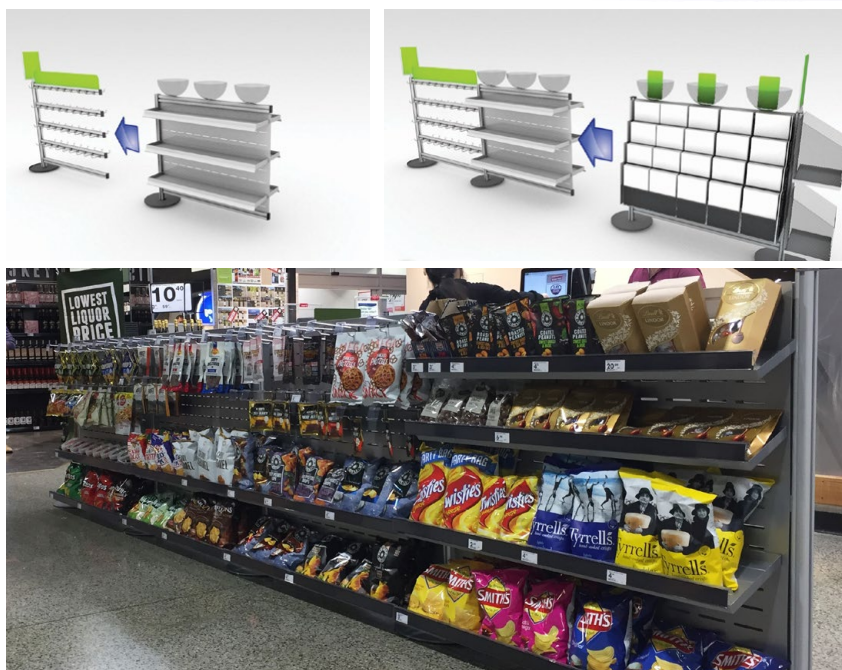
Easy to customise and fit in any retail environment. Custom attachments and colours available on request

How does it work?

The queuing & merchandising system is made up of a range of easily constructed modular units, and when put together it provides a barrier system which directs the flow of shoppers at the front end of stores

The advantage of our system is it allows queues to have a range of merchandise including confectionary, magazines and newspapers, snacks and other impulse lines which can be displayed while the shoppers are waiting in line at the front end of store

Turn waiting time into buying time!



Ticket IT

In-Store Ticketing

How it Works?

The complexity of your point of sale ticketing processes are simplified with Ticket-IT. We have automated, streamlined and simplified the entire POS ticketing process so all you need to do is focus on the profit.

SPOSgroup

SPOS Group has partnered with Ticket-IT to further compliment the comprehensive retail solution that the group offers. To learn more about the only ticketing solution ticking all the boxes, visit www.sposgroup.com/ticket-it

Proposed Ticket Shell Suite Concept



Promo



Core Tickets



Clearance Tickets

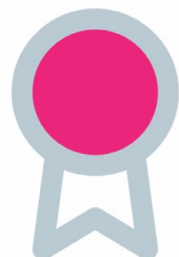


Sale Tickets



CONTROL

Ticket-IT provides the ability to control and manage in store ticketing effectively. Ticket-IT provides greater visibility, reduces the cost of lost opportunity and has a positive effect on store presentation.



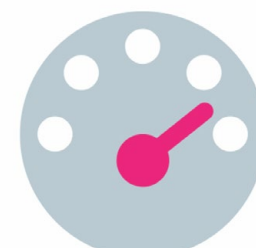
CONSISTENCY

Ticket-IT removes the manual creation of tickets and the errors that occur with repeated human intervention. Ticket-IT delivers consistent and repeatable outcomes resulting in cost savings and a more efficient use of staff.



CONFIDENCE

Ticket-IT gives confidence. This can reduce approval times, or eliminate proofing all together. Head office have the confidence that both stores and partners have the right information at the right time with the right branding.



SIMPLICITY

The process of printing, sending and then sorting through unwanted tickets is painful and complex. Ticket-IT automates the manual ticket production workflow delivering tickets within seconds, not days.

The Bottom Line...

Less wastage

Staff efficiencies

Reporting system

Reactive pricing

Consistent, clear branding message

Better conversion

Custom Data Strip

Australia's Original Supplier

SPOS was first to introduce Data Strip into the Australian market in 1982.

In 1991, SPOS NZ introduced data strip to the 100% owned and operated \$7.2b business Foodstuffs and are proud to say we are still the incumbent supplier after 28 years.

We listen to your requirements, understand the application of tools and methods that drive sales uplift in store and influence shopper purchasing decisions.

We can supply datastrip that is tooled and tailored to your shelf layout requirements. Our capable design team has the experience and knowhow to implement a new profile successfully into any situation.

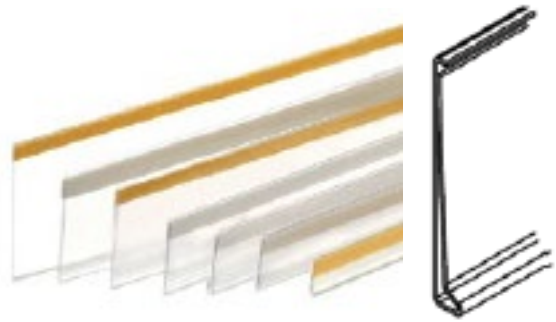
The below profile was developed exclusively for Dan Murphy's
The profile is a modified Radius Data Strip Black Kit that required no
drills/screws to install.



SKU: DATASTRIPRADIUSBLACK-NEW



Data Strip



Flat Datastrip

Our most popular style of datastrip with adhesive backing tape. Commonly used in supermarkets and other retail outlets around the world to display ticketing at the shelf edge.

Standard heights(mm): 26 - 76

Various colours available

Standard lengths 915mm-1200mm

Available with standard tape (TP), foam tape (TF) and double tape (TTP) if requested. Some styles are available up to 1240mm. Other lengths available on request. Minimum order quantities may apply.

Angled Datastrip

Angled datastrip provides greater readability in some situations. At an angle ticket information is easier to view, especially on lower shelves where shoppers may need to bend to read tickets displayed in flat datastrip.

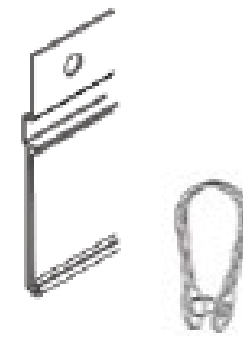
Standard heights(mm): 26 - 39

Various angles and colours available

Standard lengths 915mm-1200mm

Branding Strips

Curved branding strip sits on top of the shelf edge and has a divider attachment rail integrated into the rear of the strip. Branding strip provides a smart looking way to present branding and product information as well as an easy way to maintain on shelf category segmentation using colour or information blocking.



Hanging Datastrip

Angled datastrip provides greater readability in some situations. At an angle ticket information is easier to view, especially on lower shelves where shoppers may need to bend to read tickets displayed in flat datastrip.

Thin Datastrip

Some applications require a smaller profile, DBL is a flat datastrip with adhesive tape backing that fits 17mm and 23mm high tickets.

Clip-On Datastrip

Clip-on/over style datastrips are another great solution for wire baskets, glass shelves and wire shelf fronts in refrigerated areas. For greatest versatility these profiles are two part solutions made up of a clear rear piece which is attached to your preferred type of flat datastrip. Various sizes/profiles available.

Double Datastrip

Use our CGS or GSN profiles to construct double or multiple datastrip profiles where extra information or ticketing is required. Useful for product education and category navigation.

Data Strip

Coolroom Shelf Profile White

CODE: MPRFCO-W700*

Push on Data Strip profile 'wide' or 'narrow' mouth' for wire shelves.

WIDE:
Strip Height: 26mm
Strip Length: 700mm
Available Colours*:

CODE: MPRF-CO-W700WHITE ☐
CODE: MPRF-CO-W700BLACK ☐

NARROW:
Strip Height: 26mm
Strip Length: 660mm
Available Colours*:
CODE: MPRF-CO-660WHITE ☐



Other colours/lenths available - please enquire.

'Fast Grip' Data Strip

CODE: SF26FGT*914

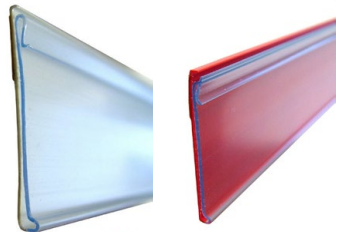
Fast Grip Adhesive datastrip black. With grip for ticket inserts

26mm(H) x 914mm(L)
Packs of 40

Available in Clear: CODE: SF26FGTCL914
Black: CODE: SF26FGTBL914



CODE: SF26FGTBL914 - with price ticket



Data Strip

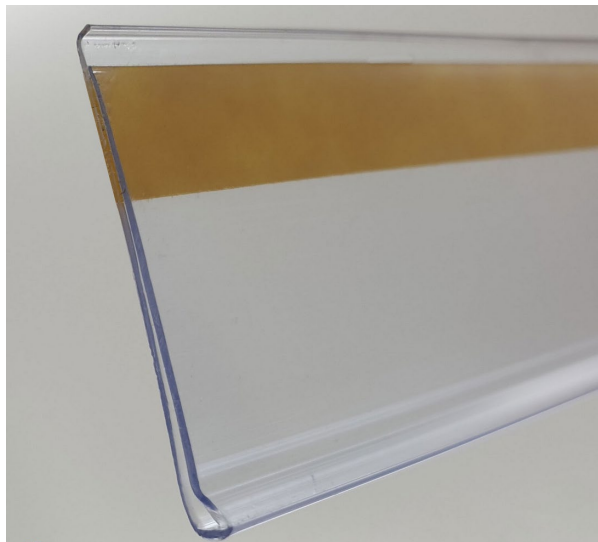
CODE: DBR**

Our DBR Data Strips are a quality, affordable data strip. Available for multiple ticket heights and strip lengths as well as colours.

Strip Height: 26mm, 39mm & more...
Strip Length: 915mm, 1200mm & more...
Available Colours: Black/Clear/White & more...

Code Examples:
DBR26-TP-1200
Clear, 26mmH Datastrip, 1200mm Long
DBR26-TP-0915
Clear, 26mmH Datastrip, 915mm Long
DBR39-TP-1200BLACK
Black, 39mmH Datastrip, 1200mm Long

Other colours/lenths available - please enquire.



Data Strip - Provista

CODE: SF26T**

The Provista Adhesive Data Strip is made to last long term without fading/yellowing. Will last longer than your standard datastrip, and has a clearer finish.

Strip Height: 26mm
Strip Length Options*: 914mm & 92mm
Available Colours*:

WHITE ☐

Codes: CODE: PSF26TWH92 - 92mm | White

CODE: PSF26TWH914 - 914mm | White

Other colours/lenths available - please enquire.



Framing and Signage

Silver Snap Frames

CODE: A#*

Silver Snap Frames with multiple print sizes used in various locations within Store. Great for interchangeable poster graphics and promos.

- A2 Code: **CODE: A2SFNH**
- A3 Code: **CODE: A3SFN**
- A4 Code: **CODE: A4SFC**
- A5 Code: **CODE: A5PCB**


Indent available in A1 and A0.
Please enquire.



A3 Counter Mat

CODE: M-MATA3

Long lasting A3 Counter Mat allows graphic insert to slide in from the top edge to be placed on counter.



A4 Duraframe

CODE: A4MAGP

Safety Frames
Please Enquire

Magnetic A4 Duraframe often used for metal cabinets. Silver & Safety Frames Available

Pack Size: 2





Pallet/Plinth Display

CODE: PWD




Comes with 4 x plinths that clip together. Additional plinths can be added. Raises product off ground for a more protected and professional appearance. Ideal for bulk and large products.

Single Plinth: 120 H x 300 W x 400 D mm
x4 Plinths: 120 H x 600 W x 800 D mm

Frame Inserts

CODES:

PLCOVA3FOLD-PORTRAIT
PLCOVA4FOLD-PORTRAIT

Foldable Clear PVC sleeves, goes inside plastic frames to keep signage in place and better present graphics.

A4: 208mmW x 294mmL
A3: 296mmW x 420mmL



Other Accessories

Business Card Holder

CODE: BCHCT6

Horizontal business card holder clear.

Sales Multiple x1

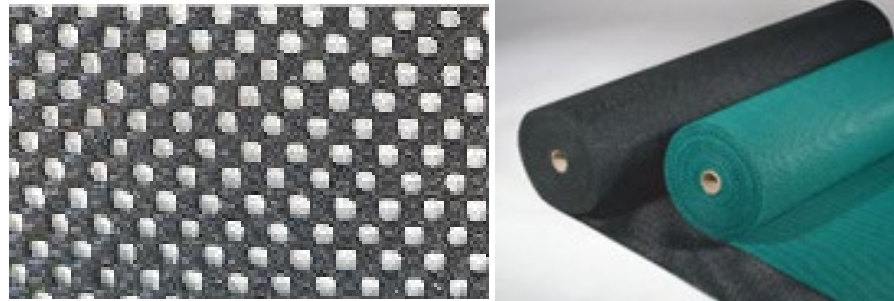


Superlux Grip Mat

CODES: SUPERLUXTH

Grip mat by the meter or by the roll.

Stop bottles or other stock slipping on shelves/fridges.



VacForm Trays

CODES: VFTRAY

We procure and sell a wide variety of VacForm Trays, ideal for ready made meals.

Present your ready made meals in a shopper friendly format.

Aids the 'Fresh' appeal.



Trading Hours Box

Trading Hours Box – Locked Box located at front of stores

A key locked waterproof box with interchangeable inserts.



Shelf Catalogue Pusher Kit

Pusher Kit mounts to shelf to highlight and offer catalogue to customers. Uses a spring pusher to keep catalogues fronted, tidy and visible.

Compatible with both Wire and Flat shelves.



Hooks and Flippers

Flipper Hooks

CODE: PGF*

Flipper Hooks for hangsell products. Various lengths available

- * 100mm (L)
Code: CODE: PGF2
- * 150mm (L)
Code: CODE: PGF3
- * 230mm (L)
Code: CODE: PGF5
- * 300mm (L)
Code: CODE: PGF6

Without Flipper



With Flipper



Flippers

CODE: HH2*

Flippers are 80mm(W) x 26mm(H) & easy to attach to the hooks. Available in colours:

- * Clear
Code: CODE: HH2CL
- * White
Code: CODE: HH2WH
- * Black
Code: CODE: HH2BK



Ridged Security Hook

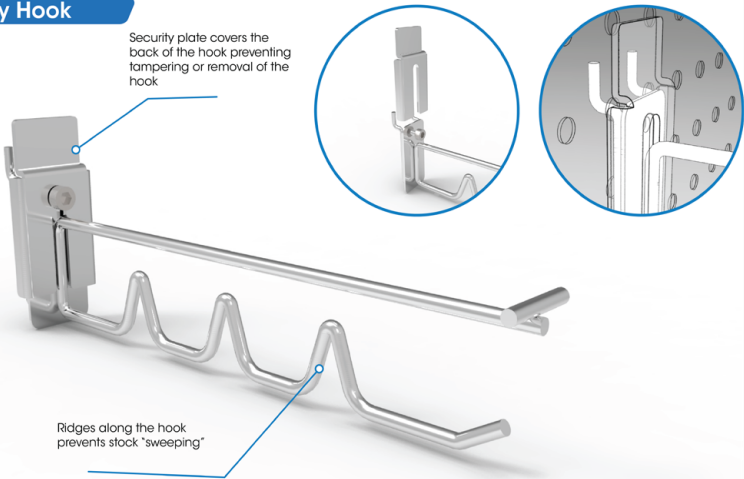
New Concept

Anti-Sweep hook with built in 'humps' to prevent hangsell products from being swept off the hook.

Designed to allow one stock item to be shopped at a time, preventing sweeping of stock.

Price/Detail on Application. Please Enquire with us!

Ridged Security Hook



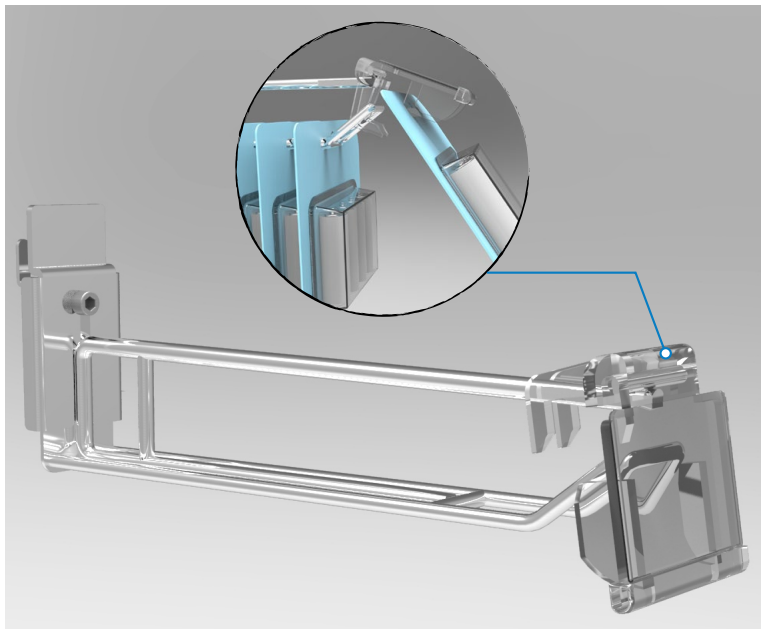
Anti-Sweep Hook

CODE: ANTISWEEPFSHOOP380-TRPDOR-ASSY

Anti-Sweep Flipsan Hoop Hook 380mmL Chrome with TrpDor & Data Strip.

Designed to allow one stock item to be shopped at a time, preventing sweeping of stock.

Price/Detail on Application. Please Enquire with us!



Wide range of hooks available

SPOS supply a range of hook types and lengths. Just send us an image or enquiry of what you're after and we will supply it.

Our Service to YOU

Online Catalogue

You can visit our website to download the latest catalogue at any time!

Simply Visit:

www.sposgroup.com/our-catalogue

Brand & Retailer Challenges

Should you come across anything that needs fronting, signage, calling out or merchandising - please don't hesitate to get in contact with any of us at SPOS.

General Enquiry

sales@sposgroup.com
02 8667 4600

SEE OUR WEBSITE FOR MORE CAPABILITIES

www.sposgroup.com