

# SPOSgroup

## Liquor Retail Solutions

02 8667 4600  
sales@sposgroup.com  
www.sposgroup.com



### Disclaimer:

The information in this catalogue is the intellectual property of SPOS Group and is confidential, and intended solely for the Addressee. If you have received this information in error, please delete it immediately and notify the sender. Any copying or further distribution beyond the original addressee is not permitted, and may be unlawful. In receiving this information you agree that any intellectual property rights in the POP Goods, Services or Concepts contained within are and shall remain the property of SPOS.





SPOSgroup

Leading Retail Solutions

# Shelf Fronting Systems

***Solutions designed to bring stock forward,  
reduce maintenance and restocking, whilst  
improving store presentation & sales.***

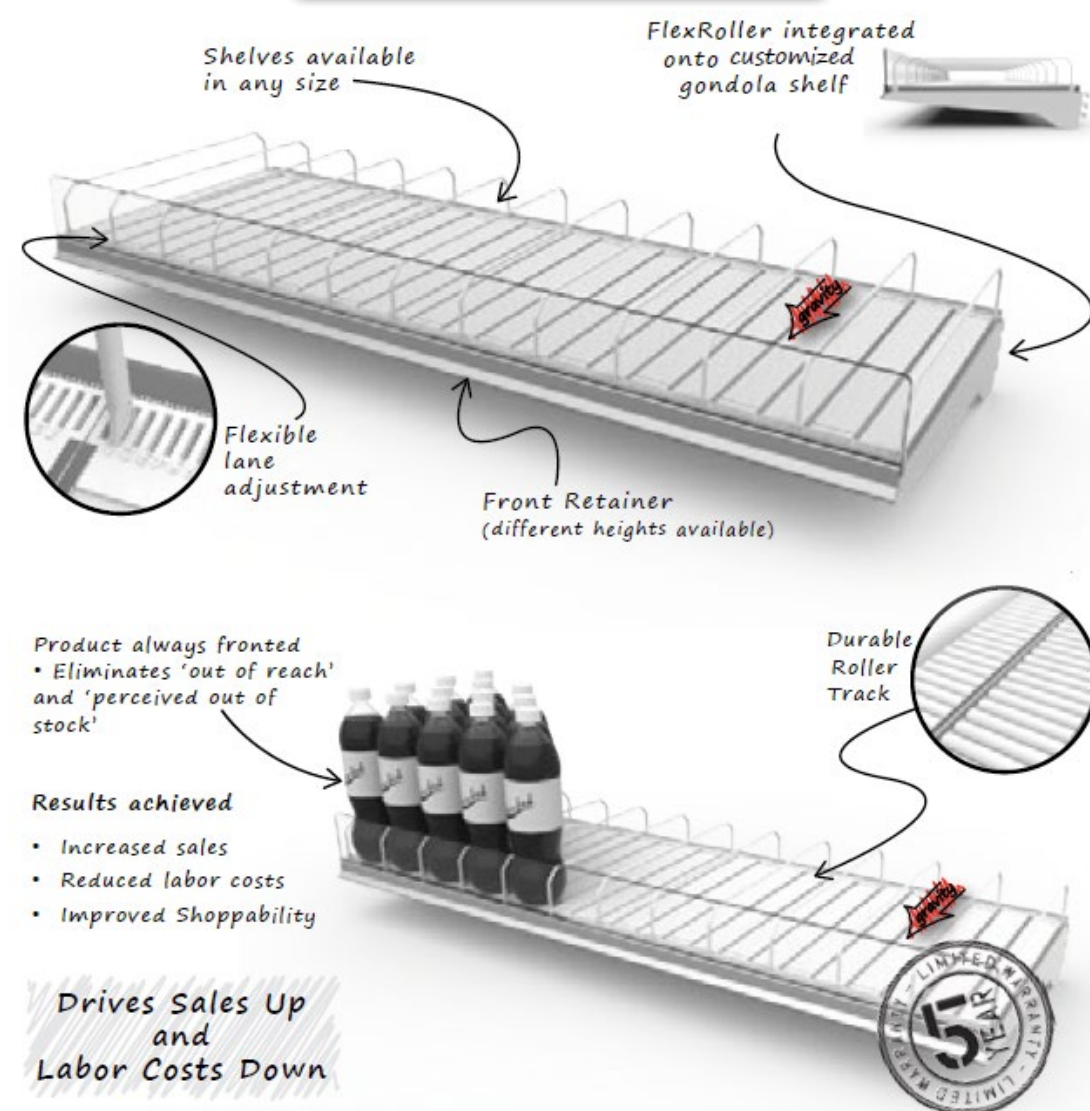
# Shelf Fronting Systems

## IMPROVE STORE PRESENTATION WHILE REDUCING MAINTENANCE & RE-STOCKING.

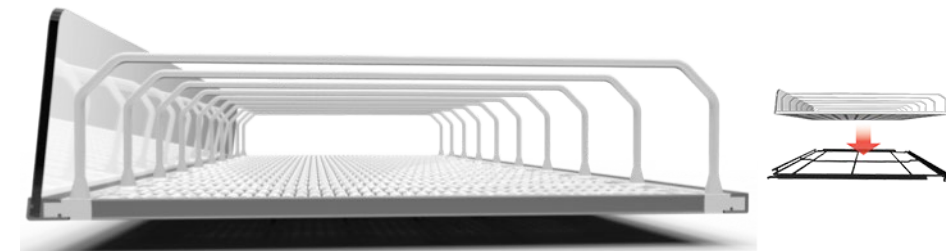
- The Roller Shelf System ensures products are always fronted to the shelf edge whilst reducing maintenance and re-stocking.
- 5 Year Warranty, durable long life fronting solution.
- Works at minimal shelf angles, as little as 3°, which requires less vertical shelf space.

Pricing & Configuration on Application. Please contact SPOS.

SEE IT IN ACTION!  
[www.sposgroup.com/flexroller](http://www.sposgroup.com/flexroller)

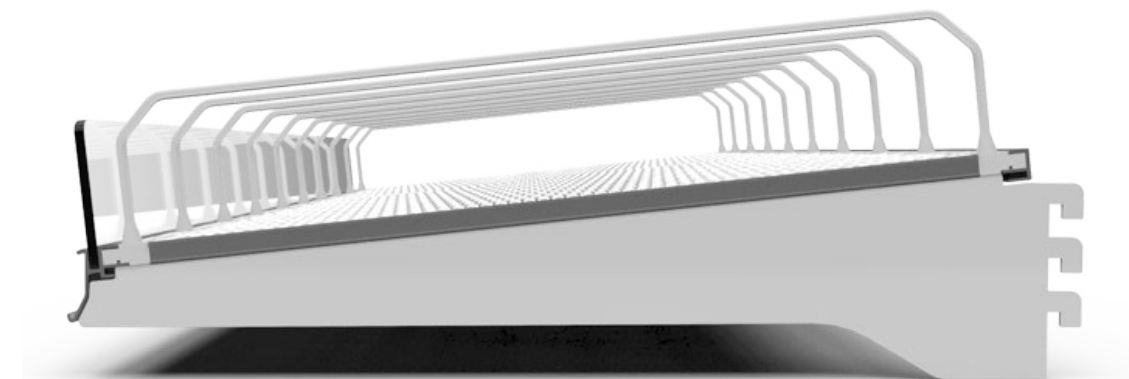


### Layover Glide



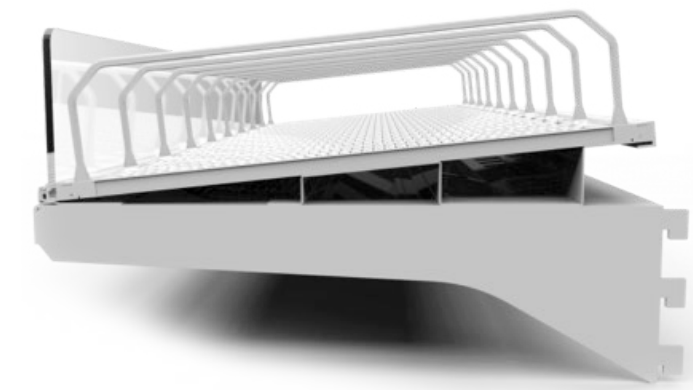
FlexRoller can be installed on any gondola or wire shelf that can be set at an angle.

### Gondola Shelf



FlexRoller integrated into a shelf for out of the box installation

### Riser Shelf



The FlexRoller riser solution installs onto existing flat gondola shelves. Riser provides the angle required for optimum fronting of the product.



# Shelf Fronting Systems



## FlexRoller in Chilled Wines

*"Layover Glide"*  
*Always Fronted, Easily restocked.*



## FlexRoller in Chilled Craft Beers

*"Layover Glide"*  
*Always Fronted, Easily restocked.*



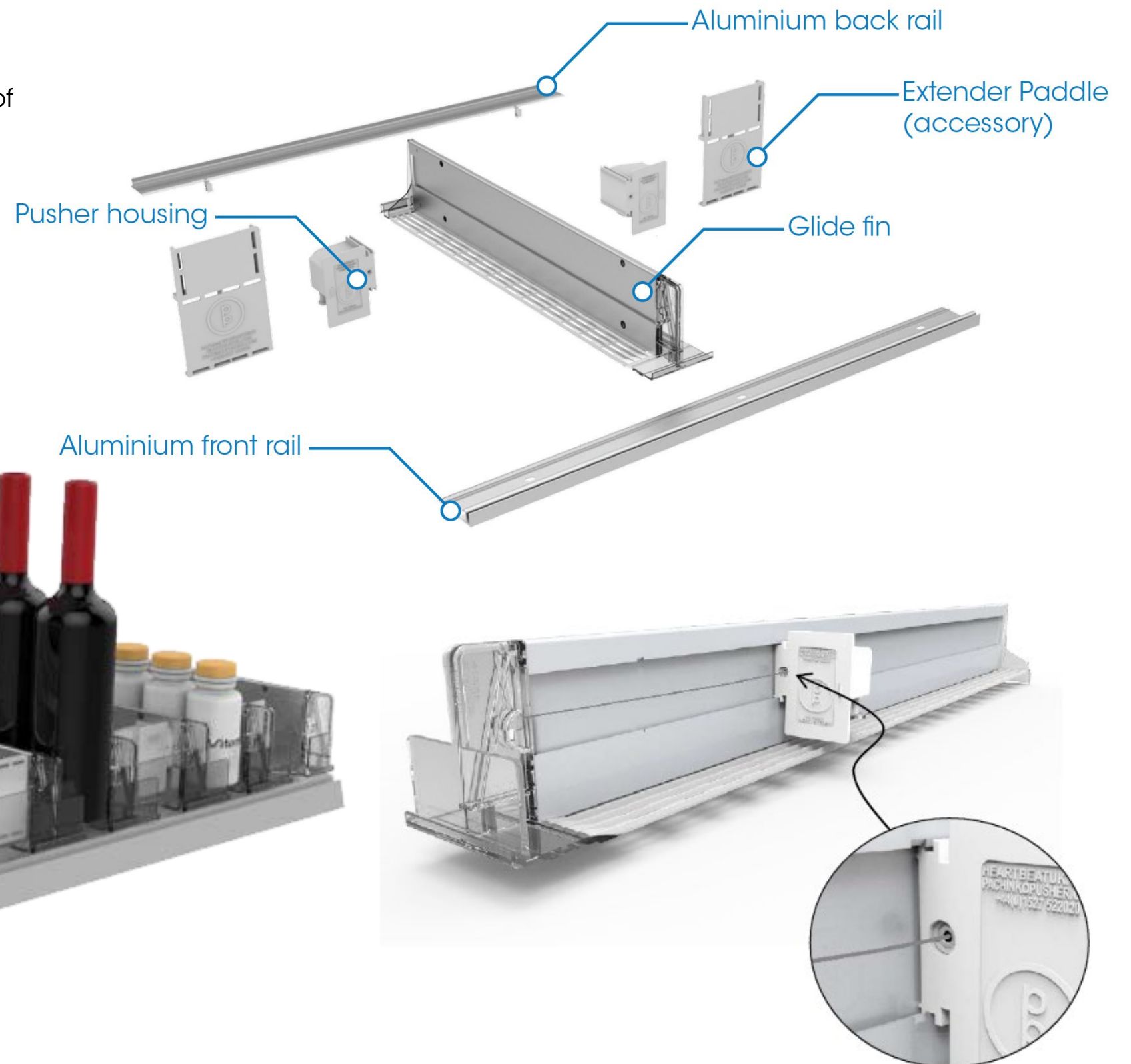
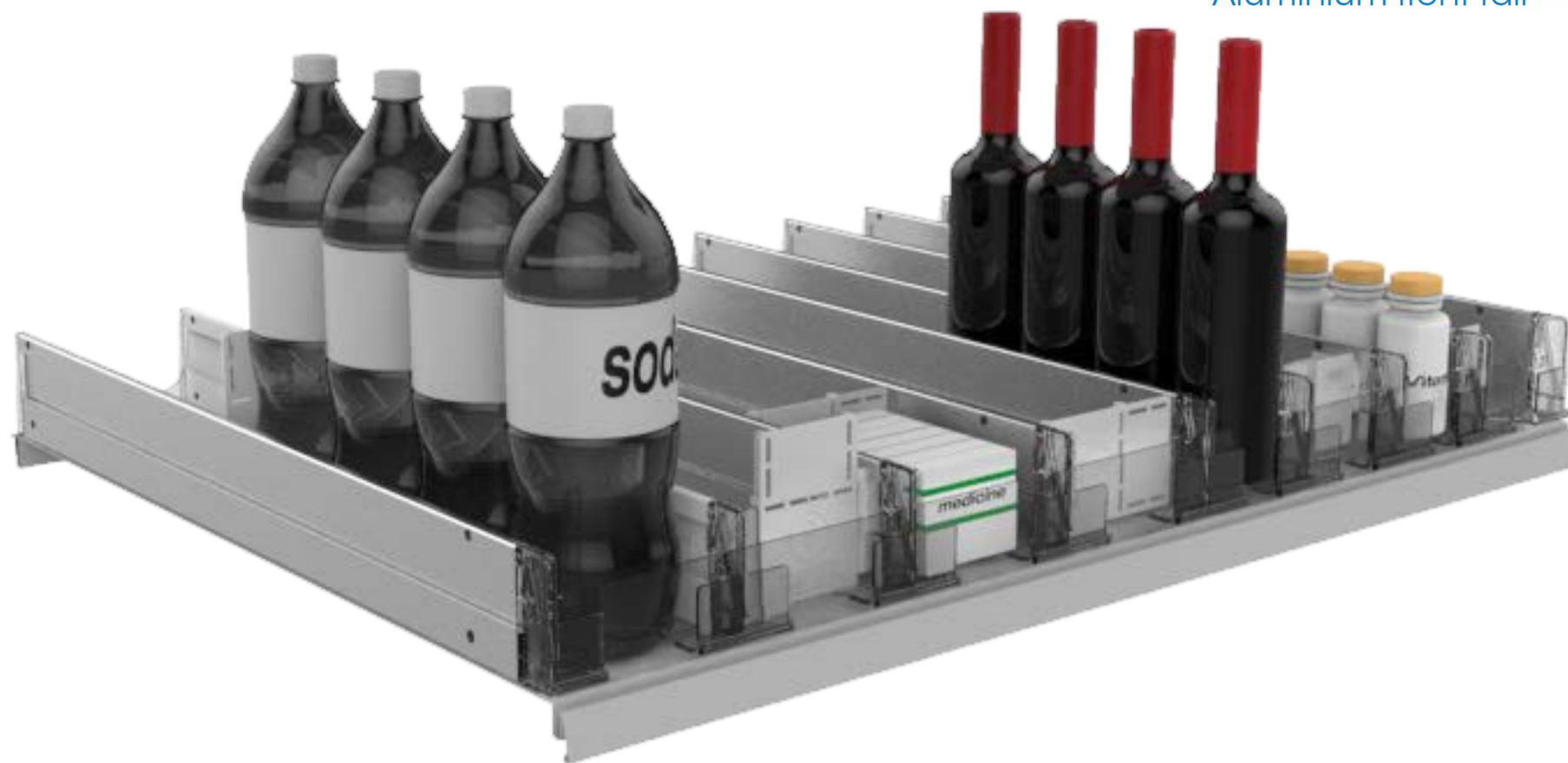
# Shelf Fronting Systems

*Introducing ProGlide, a gentle fronting merchandiser...*  
**Controlled fronting motion that drives sales.**

- Controlled feed for multiple categories
- A gentle, quiet fronting merchandiser that eliminates the 'clanging' of bottles in liquor categories
- Fast and simple replenishment that saves labour
- Modular planogram for complete flexibility on width
- Depth versatility from 270 to 770mm
- Easy installation with no tools required

**Pricing & Configuration on Application. Please contact SPOS Group.**

SEE IT IN ACTION!  
[www.sposgroup.com/proglide](http://www.sposgroup.com/proglide)





# Shelf Fronting Systems



**ProGlide in Wines**  
*Always Fronted, eliminate "out of stock" perception.*





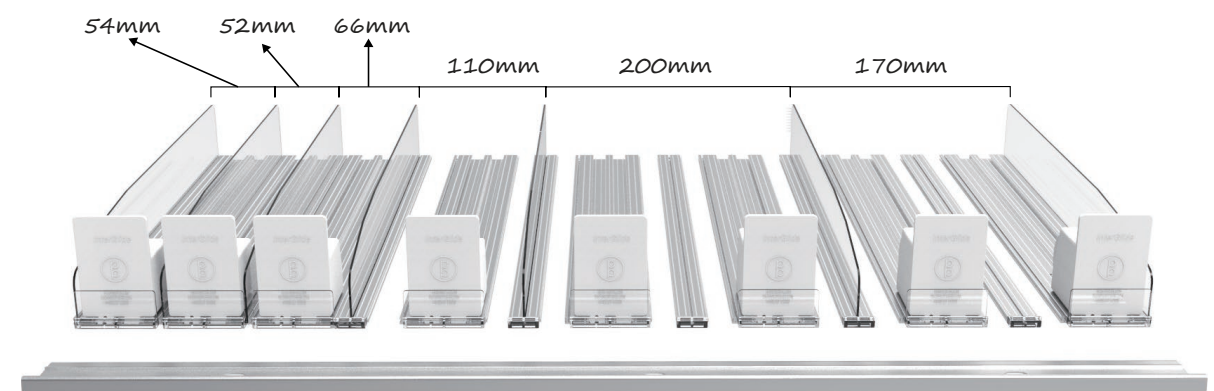
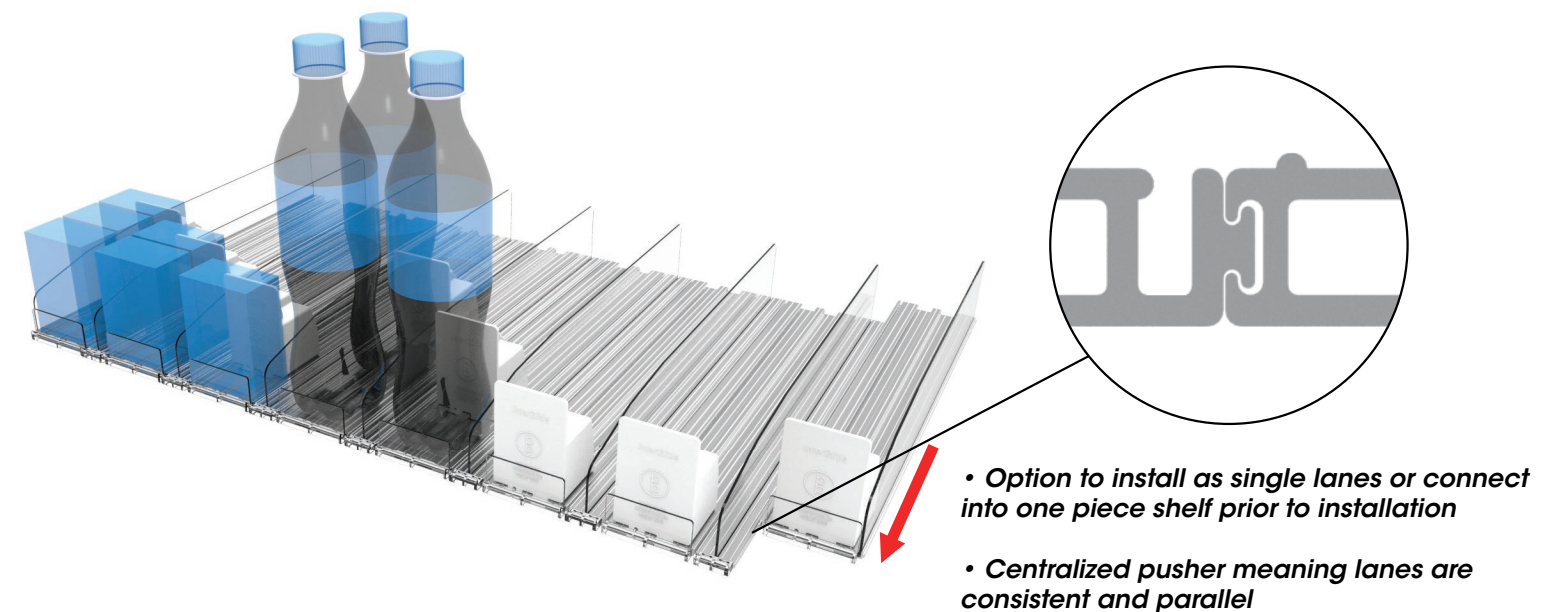
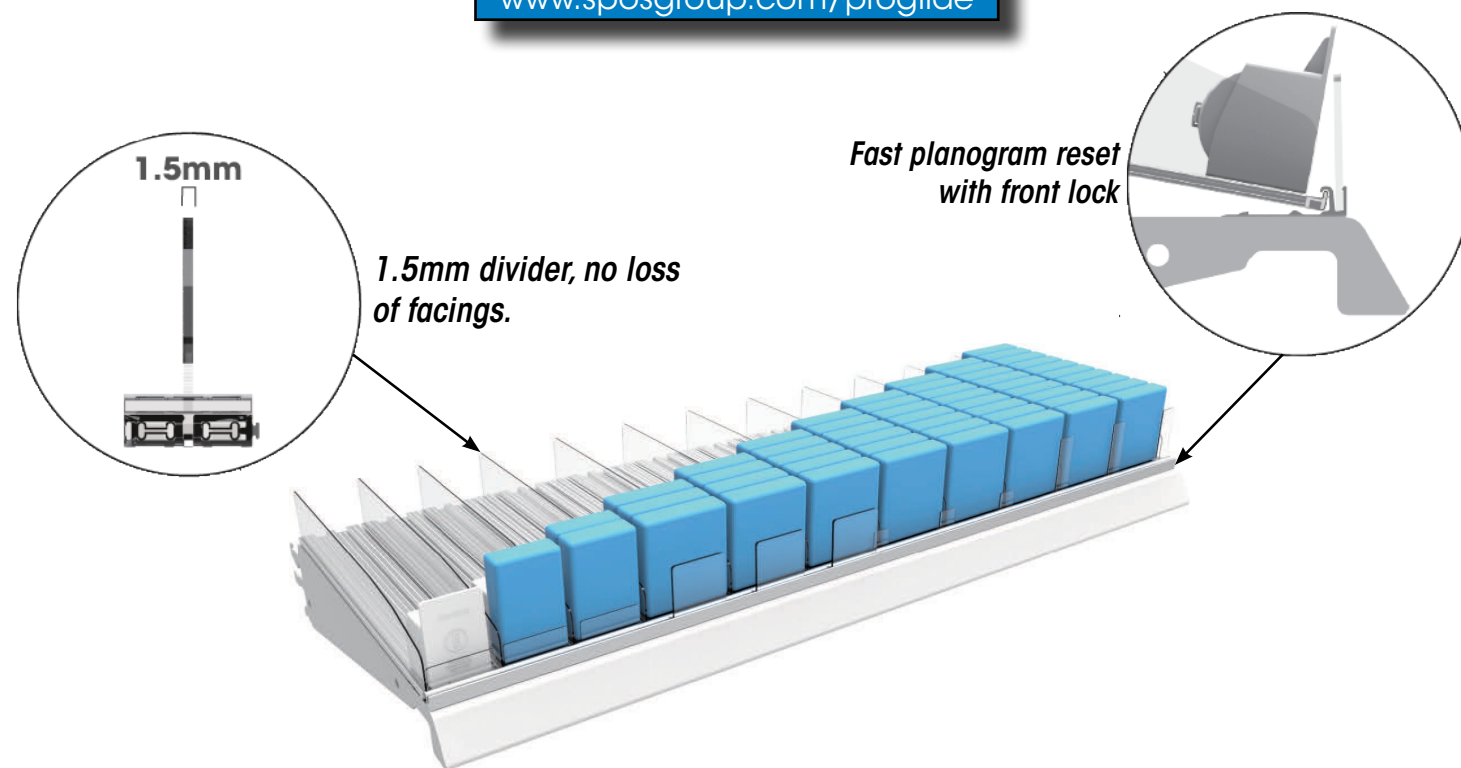
# Shelf Fronting Systems

*InterGlide, a modular interlocked fronting system...  
Gentle fronting motion with zero loss of facings.*

- Allowing efficient dividing of the category with ProGlide's 1.5mm dividers resulting in maximum facings per shelf.
- The front engagement system makes planogram adjustments and resets fast and easy.
- Modular lane assembly - complete flexibility on width
- Depth versatility - 350mm to 600mm
- Centralized bottom mounted pusher, lanes are consistent and parallel
- Easy installation with no tools required

**Pricing & Configuration on Application. Please contact SPOS.**

SEE IT IN ACTION!  
[www.sposgroup.com/proglide](http://www.sposgroup.com/proglide)



**InterGlide is so gentle & controlled, it can even front stacked cans in the liquor category. Enabling a high density shelf to be fronted seamlessly!**



# Shelf Fronting Systems



## InterGlide in conjunction with ProCab

Securing high value liquor

Always Fronted, Easily restocked.



InterGlide in Wines  
Seamless fronting stock completes the clean premium look.



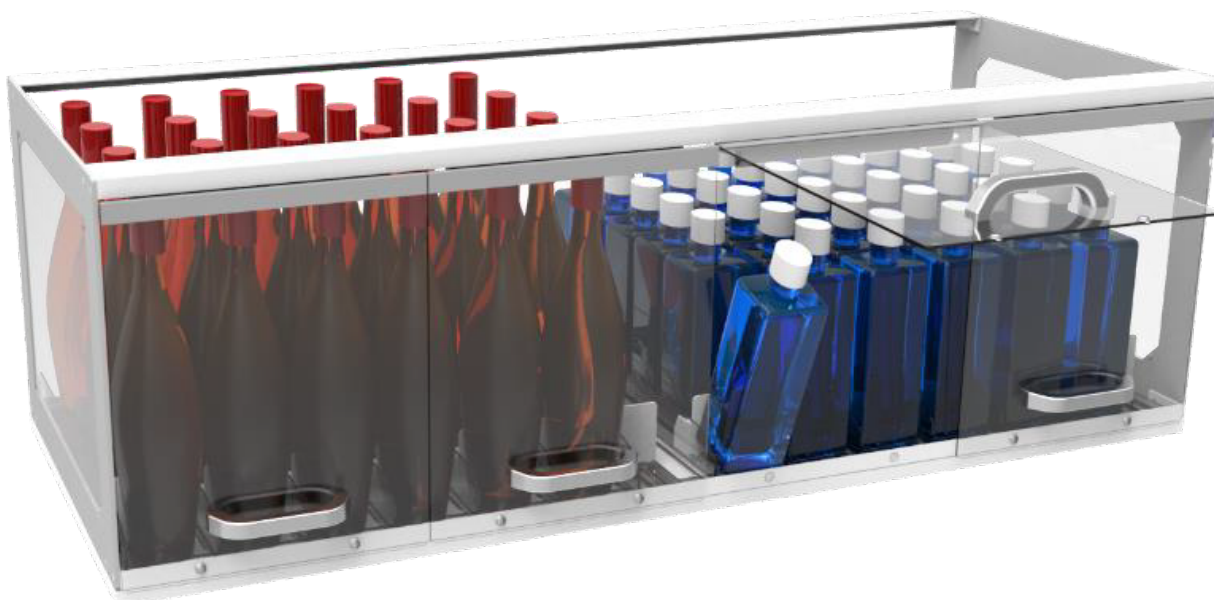


# Shelf Fronting Systems

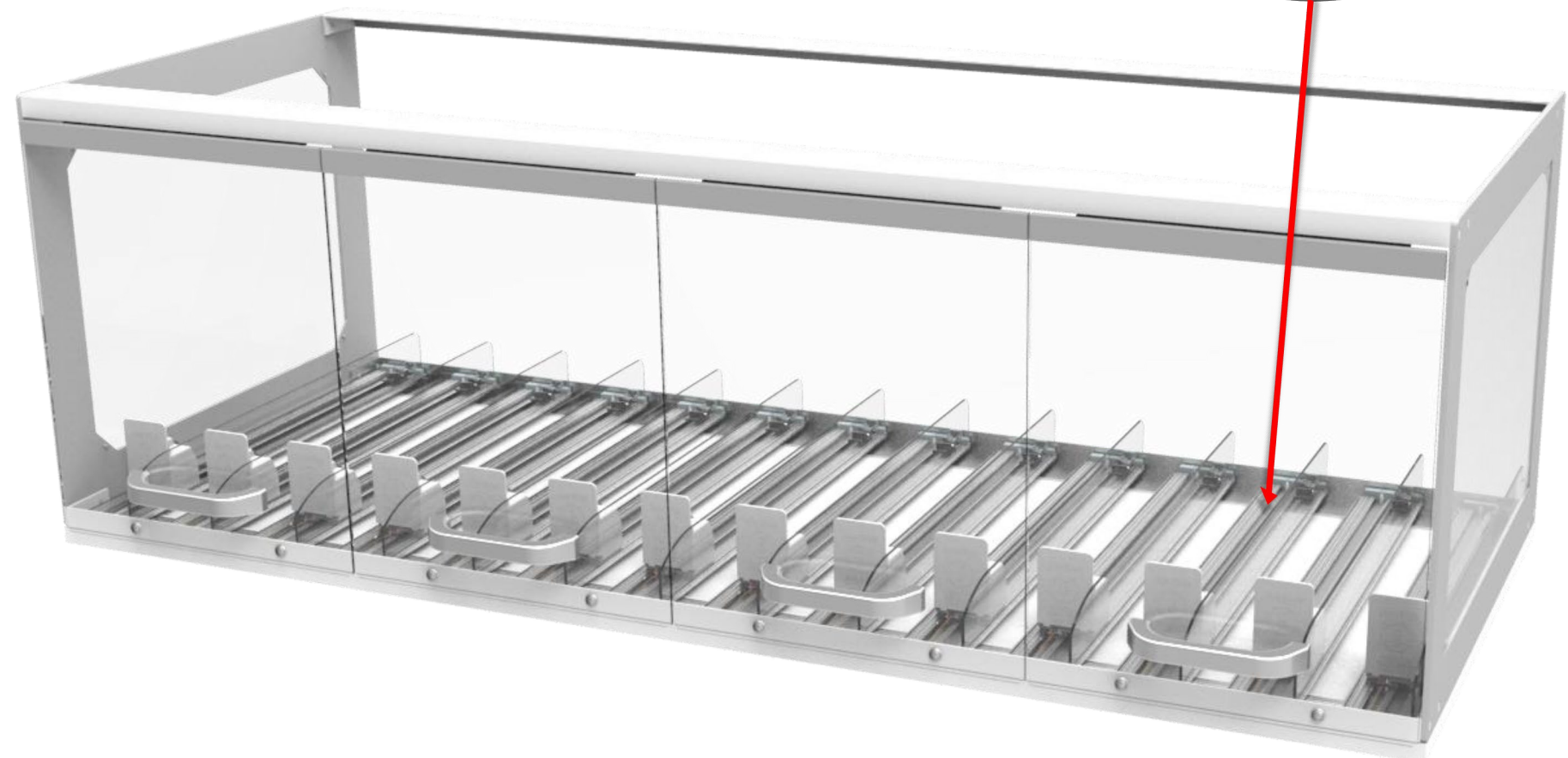
**ProCab, a Loss Prevention solution for high end liquor. Combine with InterGlide for zero loss of facings.**

- A drop-in shelf solution which houses mid to high end liquor.
- Hinged Doors force a 2-handed operation whilst shopping.
- Reduces shrinkage by 25-35%
- Combined with the InterGlide slow-release pusher system

**Pricing & Configuration on Application. Please contact SPOS.**



**ProGlide or InterGlide can be integrated into the ProCab system.**





SPOSgroup

Leading Retail Solutions

# Bespoke Solutions for Liquor

*Our award winning designs bring liquor stores a step forward in retailing.*



# Bespoke Solutions for Liquor



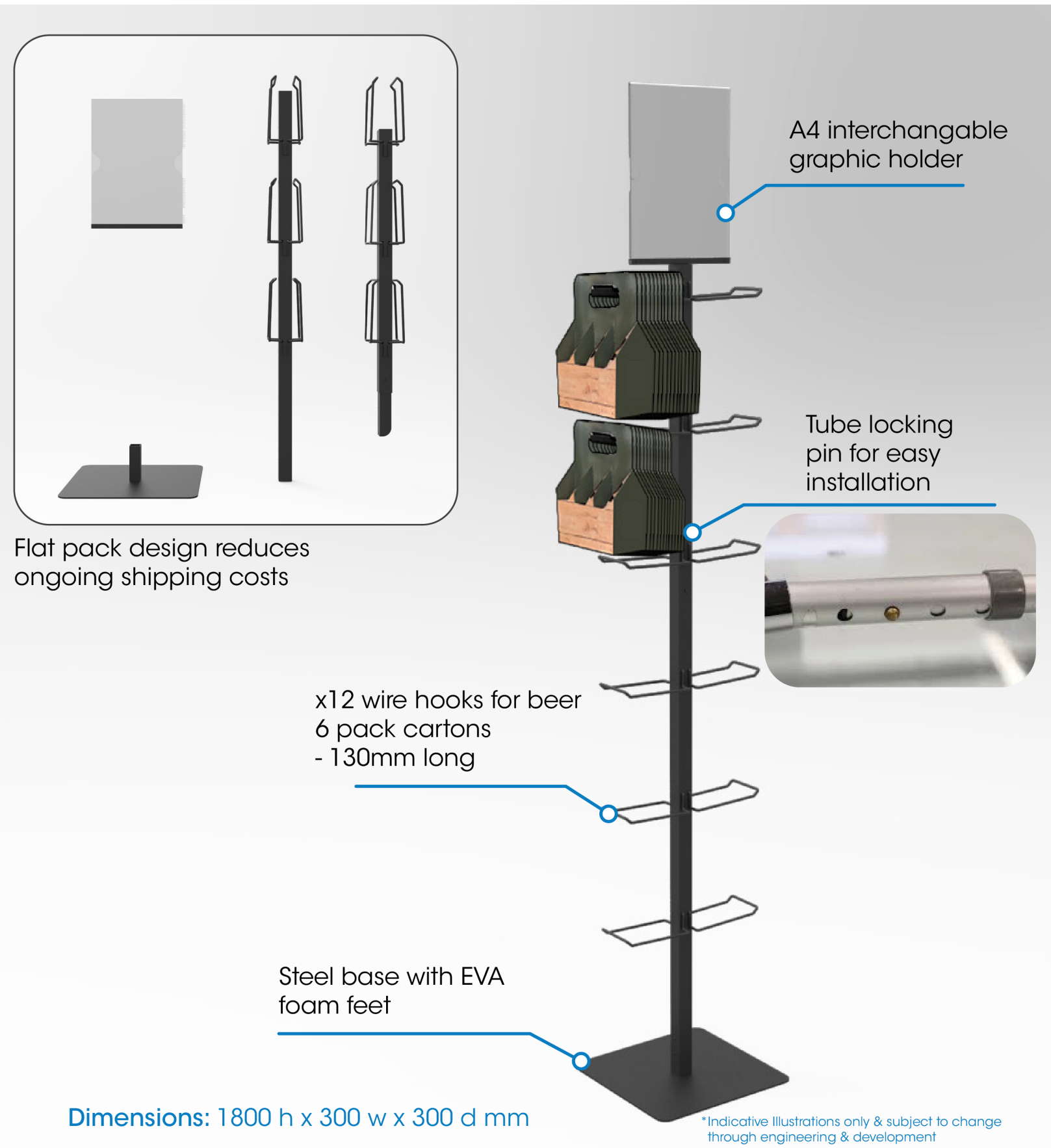
## ***The Floating Wine Display***

***Freestanding Cube Unit, 4 sided liquor presenter.***

***Promote specials & create additional merchandise space.***



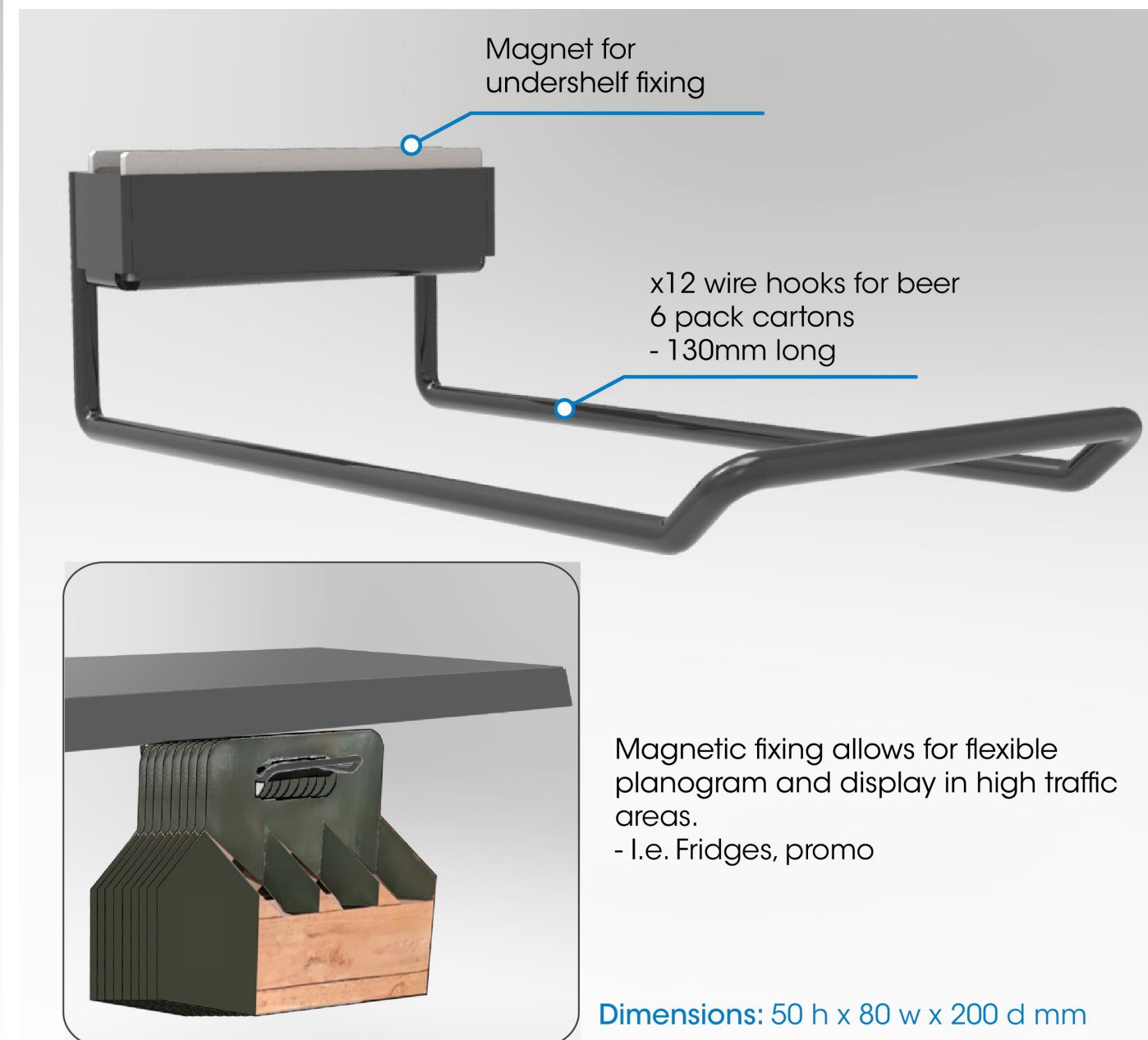
# Bespoke Solutions for Liquor



## 6 Pack Display Solution

**Holds 6 pack cartons to promote mix & match & create your own 6 pack style promotions.**

**Drive impulse and gift purchases.**





# Bespoke Solutions for Liquor

## Custom Freestanding Display Units

INTERCHANGEABLE SIDE PANELS AND RIGID HEADER GRAPHICS PRINTED TO HAVE WOODEN LOOK

YOUR COMPANY LOGO

DESIGN TO TIE IN WITH STORES OVERALL LOOK

FIXED AND INTERCHANGEABLE SHELVING OPTIONS

HIDE WHEELS WITH FRONT PANEL THAT ALSO ACTS AS BASE SHELF TICKET PRICING

EASY TO POSITION AND TO SECURE

TIMBER PRINTED DATA STRIPS PLACED AT THE FRONT OF METAL SHELVES

MORE OF THE "TIMBER LOOK" CHOOSE TO HAVE:

- WOODEN VINYL BACKING
- WOODEN SHELVES

FLAT PACKED AND EASY TO ASSEMBLE

OPTION A

OPTION B

Dimensions:  
450mm Width x 1500mm Height x 390mm Depth.

HIDDEN ACCESS TO LOCKING WHEELS AT THE FRONT OF THE UNIT



# Bespoke Solutions for Liquor

***SPOS have developed a wide range of custom free standing display units & can provide concepts to suit your store aesthetic.***





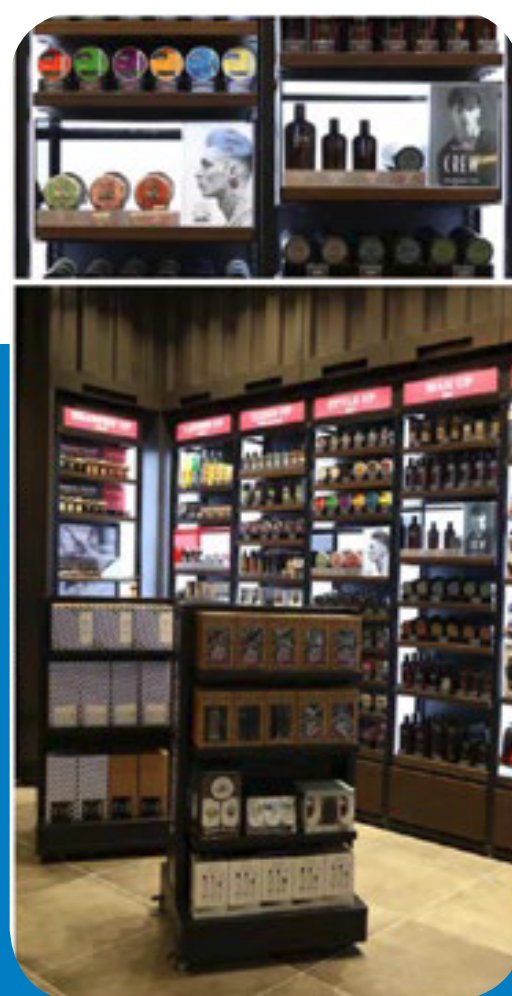
# storeinabox

retail fit-out system

SPOS 'Store-in-a-Box' System is a scalable / customisable retail fit-out solution. The modular design includes a wide range of accessories and customisable feature inserts which enable retailers or brands to easily modify, upgrade and merchandise their products in the most compelling way possible.



easy integration of technology for product education

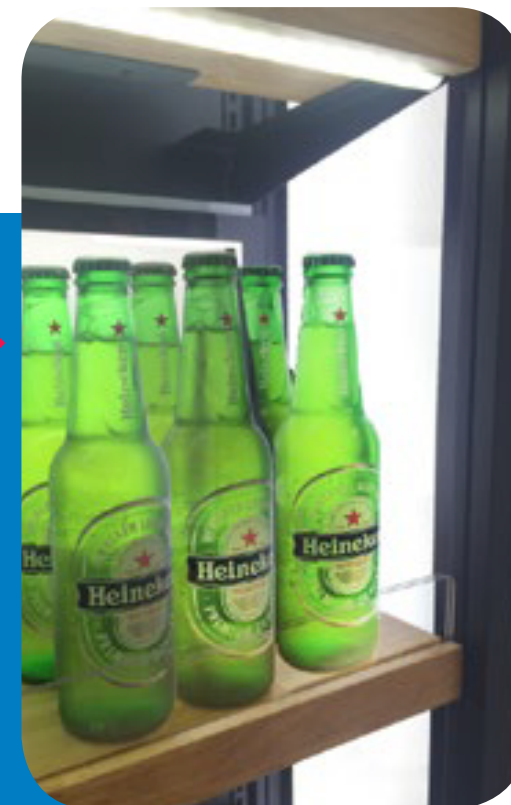
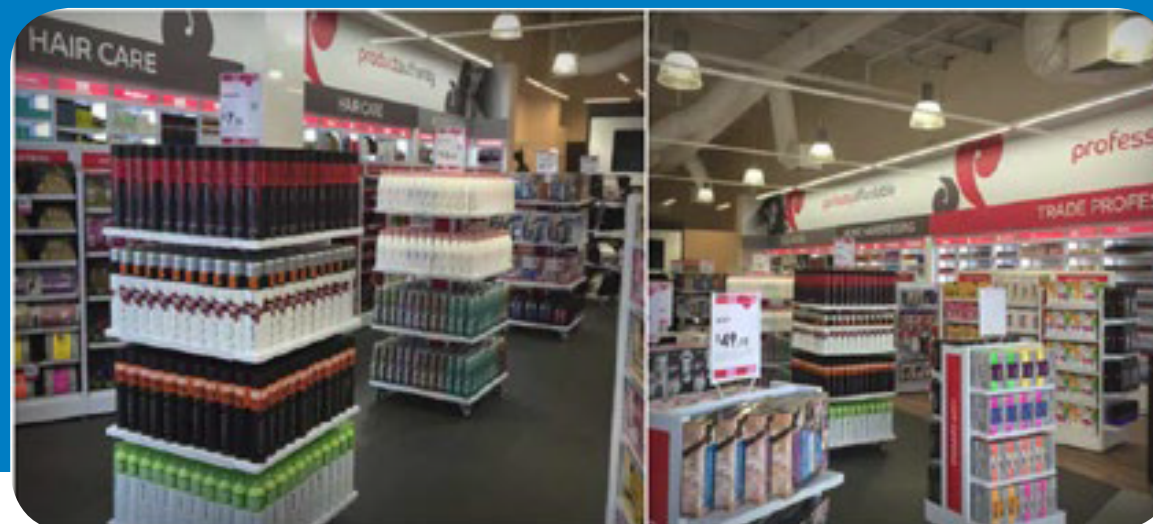


Can custom theme for particular retail environments

modular system scalable for varying store sizes

capacity for ultra-luminescent integrated lighting into system for display of premium products

suitable for multi-store and international roll-out





SPOSgroup

Leading Retail Solutions

# Complete Signage Solutions

***In store signage is an essential marketing tool  
for customer communication and engagement.***



# Complete Signage Solutions

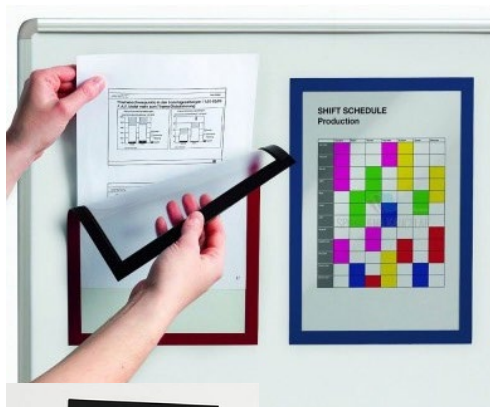
In-store signage is an essential marketing tool for customer communication and engagement. Whether you are displaying new product, sale offers, seasonal promotions or product information SPOS has a sign or ticket display system that will work for you.



Snap Frames



Poster Frames



Magnetic DuraFrames



Sign Arms



Floor Stands

### Sizes

Poster Frames and Snap Frames are available in sizes from A0 to A6. Most sizes can be ordered in both portrait and landscape formats.

### Accessories

A wide range of accessories are available, including solutions for floor and shelf mounting or suspension.

## Rotating Aisle Display



In-store promotions and product information can be a huge boost to your business triggering above the line advertising recall in-store, introducing new products or promoting sale items. The RAD is also an effective tool in categories where you need to provide shoppers with product information to guide their purchase decisions.

### UNIT SPECIFICATIONS

Height: 600mm Width: 130mm Depth: 130mm  
Fabricated metal powder coated body and brackets with 3 PVC insert graphic covers. Graphic panels sold separately. Full in house graphic design service available contact the SPOS customer service team for further information.





Sign Holders



Acrylic Displays



Poster Rails



Hanging Systems



# Queuing Solutions

The Q-Motive merchandising system is a versatile queuing solution that uplifts sales and improves customer flow in-store.

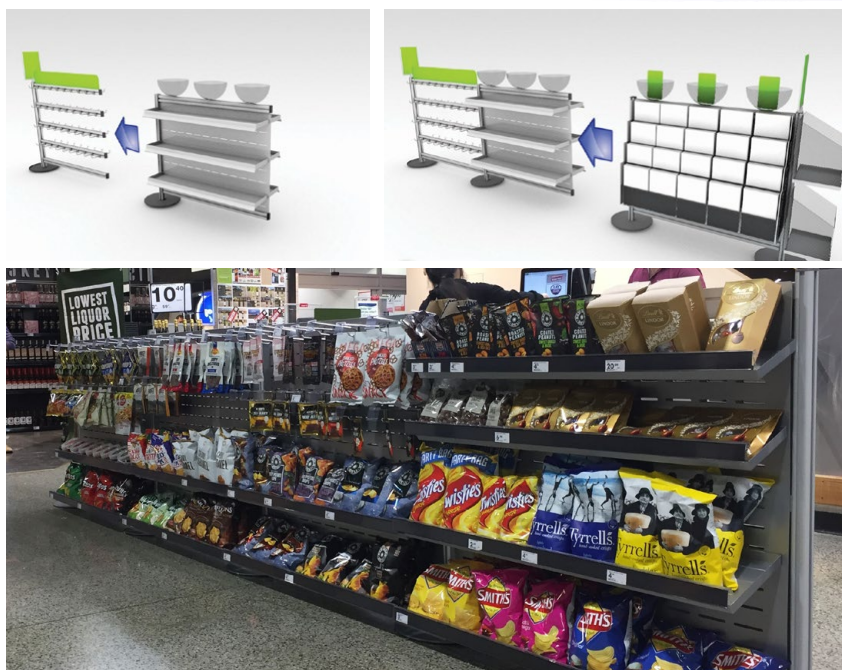
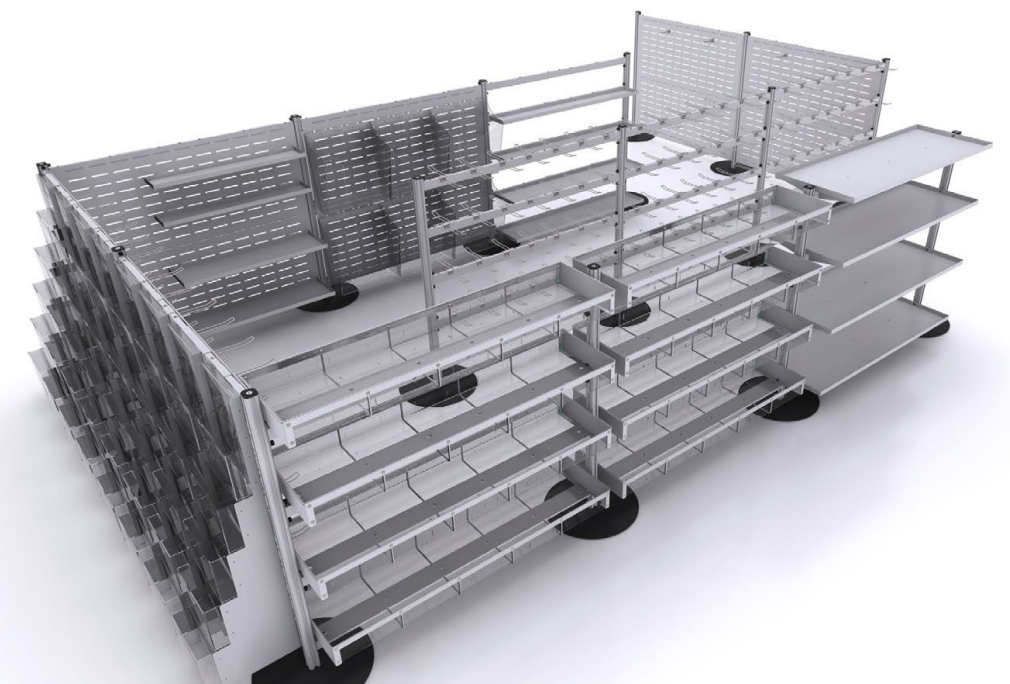


## Benefits

**Drive Sales:** Our system has been proven to increase impulse purchases by up to 40%.

**Increase In-Store Branding:** Our solutions create additional POS opportunities for both brands and retailers.

**Recover Costs:** System Investment costs can be recovered quickly by obtaining premium placement fees.



## How does it work?

Q-Motive merchandising system is made up of a range of easily constructed modular units, and when put together it provides a barrier system which directs the flow of shoppers at the front end of stores

The advantage of Q-Motive is to have a range of merchandise including confectionary, magazines and newspapers, snacks and other impulse lines which can be displayed while the shoppers are waiting in line at the front end of store

Easy to customise and fit in any retail environment. Custom attachments and colours available on request





# Ticket

## In-Store Ticketing

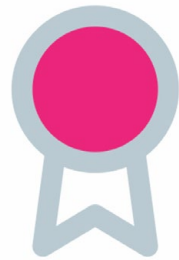
### How it Works?

The complexity of your point of sale ticketing processes are simplified with Ticket-IT. We have automated, streamlined and simplified the entire POS ticketing process so all you need to do is focus on the profit.



#### CONTROL

Ticket-IT provides the ability to control and manage in store ticketing effectively. Ticket-IT provides greater visibility, reduces the cost of lost opportunity and has a positive effect on store presentation.



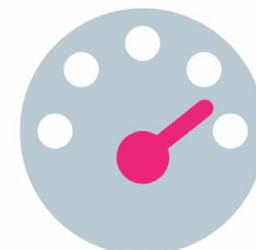
#### CONSISTENCY

Ticket-IT removes the manual creation of tickets and the errors that occur with repeated human intervention. Ticket-IT delivers consistent and repeatable outcomes resulting in cost savings and a more efficient use of staff.



#### CONFIDENCE

Ticket-IT gives confidence. This can reduce approval times, or eliminate proofing all together. Head office have the confidence that both stores and partners have the right information at the right time with the right branding.



#### SIMPLICITY

The process of printing, sending and then sorting through unwanted tickets is painful and complex. Ticket-IT automates the manual ticket production workflow delivering tickets within seconds, not days.

## SPOSgroup

SPOS Group has partnered with Ticket-IT to further compliment the comprehensive retail solution that the group offers. To learn more about the only ticketing solution ticking all the boxes, visit [www.sposgroup.com/ticket-it](http://www.sposgroup.com/ticket-it)

## The Bottom Line...

**Less wastage**

**Staff efficiencies**

**Reporting system**

**Reactive pricing**

**Consistent, clear branding message**

**Better conversion**



# Custom Data Strip

## Australia's Original Supplier

SPOS was first to introduce Data Strip into the Australian market in 1982.

In 1991, SPOS NZ introduced data strip to the 100% owned and operated \$7.2b business Foodstuffs and are proud to say we are still the incumbent supplier after 28 years.

We listen to your requirements, understand the application of tools and methods that drive sales uplift in store and influence shopper purchasing decisions.

We can supply datastrip that is tooled and tailored to your shelf layout requirements. Our capable design team has the experience and knowhow to implement a new profile successfully into any situation.

The below profile was developed exclusively for one of our clients. The profile is a modified Radius Data Strip Black Kit that required no drills/screws to install.

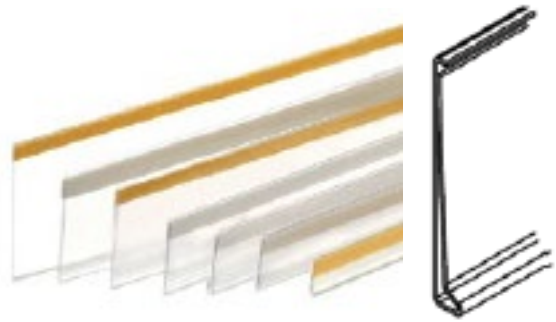


SKU: DATASTRIPRADIUSBLACK-NEW





# Data Strip



## Flat Datastrip

Our most popular style of datastrip with adhesive backing tape. Commonly used in supermarkets and other retail outlets around the world to display ticketing at the shelf edge.

**Standard heights(mm): 26 - 76**

**Various colours available**

**Standard lengths 915mm-1200mm**

Available with standard tape (TP), foam tape (TF) and double tape (TTP) if requested. Some styles are available up to 1240mm. Other lengths available on request. Minimum order quantities may apply.

## Angled Datastrip

Angled datastrip provides greater readability in some situations. At an angle ticket information is easier to view, especially on lower shelves where shoppers may need to bend to read tickets displayed in flat datastrip.

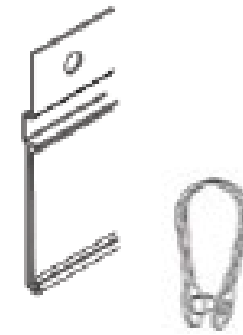
**Standard heights(mm): 26 - 39**

**Various angles and colours available**

**Standard lengths 915mm-1200mm**

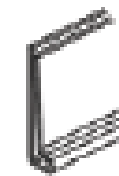
## Branding Strips

Curved branding strip sits on top of the shelf edge and has a divider attachment rail integrated into the rear of the strip. Branding strip provides a smart looking way to present branding and product information as well as an easy way to maintain on shelf category segmentation using colour or information blocking.



## Hanging Datastrip

Angled datastrip provides greater readability in some situations. At an angle ticket information is easier to view, especially on lower shelves where shoppers may need to bend to read tickets displayed in flat datastrip.



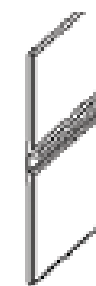
## Thin Datastrip

Some applications require a smaller profile, DBL is a flat datastrip with adhesive tape backing that fits 17mm and 23mm high tickets.



## Clip-On Datastrip

Clip-on/over style datastrips are another great solution for wire baskets, glass shelves and wire shelf fronts in refrigerated areas. For greatest versatility these profiles are two part solutions made up of a clear rear piece which is attached to your preferred type of flat datastrip. Various sizes/profiles available.



## Double Datastrip

Use our CGS or GSN profiles to construct double or multiple datastrip profiles where extra information or ticketing is required. Useful for product education and category navigation.



# Data Strip

## Wire Shelf Profile White CODE: MPRFCO-W700\*

Push on Data Strip profile 'wide or narrow mouth' for wire shelves.

**WIDE:**  
Strip Height: 26mm  
Strip Length: 700mm  
Available Colours\*:

CODE: MPRF-CO-W700WHITE ☐  
CODE: MPRF-CO-W700BLACK ☐

**NARROW:**  
Strip Height: 26mm  
Strip Length: 660mm  
Available Colours\*:  
CODE: MPRF-CO-660WHITE ☐



Other colours/lenths available - please enquire.

## 'Fast Grip' Data Strip CODE: SF26FGT\*914

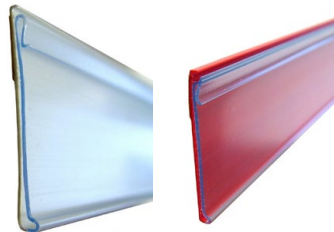
Fast Grip Adhesive datastrip black. With grip for ticket inserts

26mm(H) x 914mm(L)  
Packs of 40

Available in Clear: CODE: SF26FGTCL914  
Black: CODE: SF26FGTBL914



CODE: SF26FGTBL914 - with price ticket



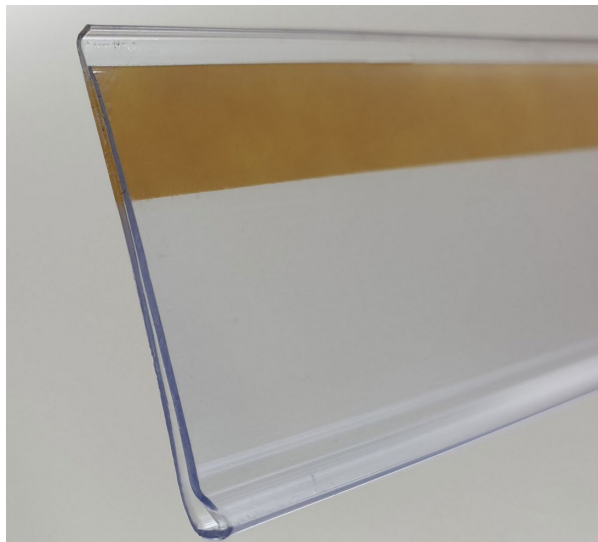
## Data Strip CODE: DBR\*\*

Our DBR Data Strips are a quality, affordable data strip. Available for multiple ticket heights and strip lengths as well as colours.

Strip Height: 26mm, 39mm & more...  
Strip Length: 915mm, 1200mm & more...  
Available Colours: Black/Clear/White & more...

Code Examples:  
DBR26-TP-1200  
Clear, 26mmH Datastrip, 1200mm Long  
DBR26-TP-0915  
Clear, 26mmH Datastrip, 915mm Long  
DBR39-TP-1200BLACK  
Black, 39mmH Datastrip, 1200mm Long

Other colours/lenths available - please enquire.



## Data Strip - Provista CODE: SF26T\*\*

The Provista Adhesive Data Strip is made to last long term without fading/yellowing. Will last longer than your standard datastrip, and has a clearer finish.

Strip Height: 26mm  
Strip Length Options\*: 914mm & 92mm  
Available Colours\*:

WHITE ☐

Codes: CODE: PSF26TWH92 - 92mm | White

CODE: PSF26TWH914 - 914mm | White

Other colours/lenths available - please enquire.





# Framing and Signage

Silver Snap Frames

CODE: A#\*

Silver Snap Frames with multiple print sizes used in various locations within Store. Great for interchangeable poster graphics and promos.

- A2 Code: **CODE: A2SFNH**
- A3 Code: **CODE: A3SFN**
- A4 Code: **CODE: A4SFC**
- A5 Code: **CODE: A5PCB**


Indent available in A1 and A0.  
Please enquire.



A3 Counter Mat

CODE: M-MATA3

Long lasting A3 Counter Mat allows graphic insert to slide in from the top edge to be placed on counter.



A4 Duraframe

CODE: A4MAGP

Safety Frames  
Please Enquire

Magnetic A4 Duraframe often used for metal cabinets. Silver & Safety Frames Available

Pack Size: 2





Pallet/Plinth Display

CODE: PWD




Comes with 4 x plinths that clip together. Additional plinths can be added. Raises product off ground for a more protected and professional appearance. Ideal for bulk and large products.

**Single Plinth: 120 H x 300 W x 400 D mm**  
**x4 Plinths: 120 H x 600 W x 800 D mm**

Frame Inserts

CODES:

PLCOVA3FOLD-PORTRAIT  
PLCOVA4FOLD-PORTRAIT

Foldable Clear PVC sleeves, goes inside plastic frames to keep signage in place and better present graphics.

A4: 208mmW x 294mmL  
A3: 296mmW x 420mmL





# Other Accessories

## Business Card Holder

**CODE: BCHCT6**

Horizontal business card holder clear.

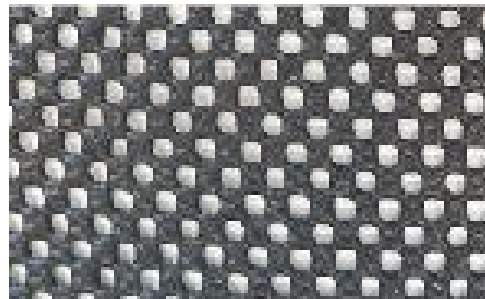
Sales Multiple x1



## Superlux Grip Mat **CODE: SUPERLUXTH/1M/BLK**

Grip mat by the meter.

Stop bottles or other stock slipping on shelves/fridges.



## Business Card Holder

**CODE: BCHCT6**

Trading Hours Box – Locked Box located at front of Dan Murphy's stores

o A key locked waterproof box with interchangeable inserts.





# Hooks and Flippers

Flipper Hooks

CODE: PGF\*

Flipper Hooks for hangsell products. Various lengths available

\* 100mm (L)  
Code: CODE: PGF2

\* 150mm (L)  
Code: CODE: PGF3

\* 230mm (L)  
Code: CODE: PGF5

\* 300mm (L)  
Code: CODE: PGF6

Without Flipper

With Flipper

Prong Hooks

CODE: PGS\*

Standard Hooks for Volcano/PunchPanel, 4mm Diameter. Varying Lengths.

\* 100mm (L)  
Code: CODE: PGS2

\* 150mm (L)  
Code: CODE: PGS3

\* 230mm (L)  
Code: CODE: PGS4

Please Note

Carton Size for all hooks: 50 Hooks

Pack size for all flippers: 50 Flippers

Flippers

CODE: HH2\*

Flippers are 80mm(W) x 26mm(H) & easy to attach to the hooks. Available in colours:

\* Clear  
Code: CODE: HH2CL

\* White  
Code: CODE: HH2WH

\* Black  
Code: CODE: HH2BK

Anti-Sweep Hook

CODE: ANTISWEEPFSHOOP380-TRPDOR-ASSY

Anti-Sweep Flipsan Hoop Hook 380mmL Chrome with TrpDor & Data Strip.

Designed to allow one stock item to be shopped at a time, preventing sweeping of stock.

Price/Detail on Application. Please Enquire with us!

Wide range of hooks available

SPOS supply a range of hook types and lengths. Just send us an image or enquiry of what you're after and we will supply it.

02 8667 4600

sales@sposgroup.com

SPOSgroup

Heard

spos

posm solutions

Ticket IT In-Store Ticketing

pg. 26



# Our Service to YOU

## Online Catalogue

You can visit our website to download the latest catalogue at any time!

### Simply Visit:

[www.sposgroup.com/our-catalogue](http://www.sposgroup.com/our-catalogue)

## Brand & Retailer Challenges

Should you come across anything that needs fronting, signage, calling out or merchandising - please don't hesitate to get in contact with any of us at SPOS.

### General Enquiry

sales@sposgroup.com  
02 8667 4600

SEE OUR WEBSITE FOR MORE CAPABILITIES

[www.sposgroup.com](http://www.sposgroup.com)